

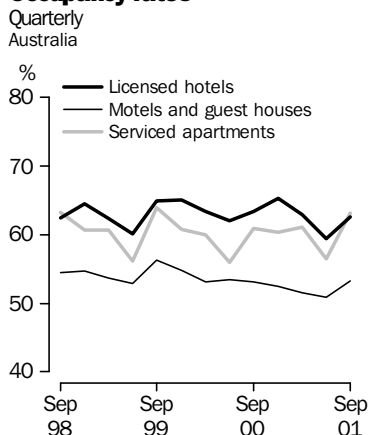


# TOURIST ACCOMMODATION AUSTRALIA

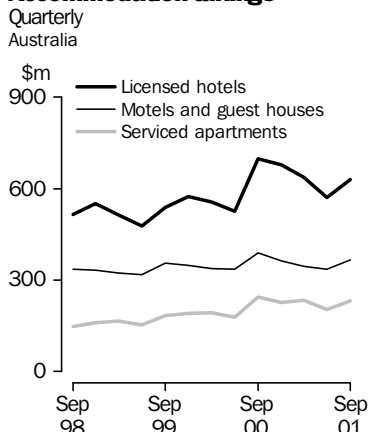
EMBARGO: 11:30AM (CANBERRA TIME) FRI 14 DECEMBER 2001

## SEPTEMBER QTR KEY FIGURES

### Occupancy rates



### Accommodation takings



LICENSED HOTELS	Sep Qtr 2000	Sep Qtr 2001	change
Rooms available (no.)	76 607	78 241	2.1 %
Room nights occupied (no.)	4 446.6	4 506.3	1.3 %
Room occupancy rate (%)	63.3	62.6	-0.7 pts
Takings from accommodation (\$'000)	698 985	628 608	-10.1 %
Takings per room night occupied (\$)	157.2	139.5	-11.3 \$

MOTELS AND GUEST HOUSES	Sep Qtr 2000	Sep Qtr 2001	change
Rooms available (no.)	85 078	84 021	-1.2 %
Room nights occupied (no.)	4 142.4	4 112.6	-0.7 %
Room occupancy rate (%)	53.1	53.2	0.1 pts
Takings from accommodation (\$'000)	387 739	365 585	-5.7 %
Takings per room night occupied (\$)	93.6	88.9	-5.0 \$

SERVICED APARTMENTS	Sep Qtr 2000	Sep Qtr 2001	change
Rooms available (no.)	33 394	34 467	3.2 %
Room nights occupied (no.)	1 859.7	2 000.1	7.5 %
Room occupancy rate (%)	60.9	63.1	2.2 pts
Takings from accommodation (\$'000)	243 388	232 329	-4.5 %
Takings per room night occupied (\$)	130.9	116.2	-11.2 \$

## SEPTEMBER QTR KEY POINTS

### INCREASES IN CAPACITY AND OCCUPANCY

■ In September quarter 2001 room nights occupied in hotels, motels, guest houses and serviced apartments increased 1.6% nationally compared to September quarter 2000. This increase corresponds with a 0.8% increase in capacity. Occupancy rates increased by 0.3 percentage points. All States and Territories show higher or unchanged occupancy rates, except NSW and Victoria.

### NSW TAKINGS FALL COMPARED TO THE OLYMPIC PERIOD

■ Accommodation takings decreased 7.8% in the September quarter 2001 compared to the September quarter 2000. NSW (down 24.3%) and in particular the Sydney Tourism Region (down 32.1%), recorded the largest decreases after record highs during the Olympics. Average takings per room night occupied in Sydney were \$197 in the September quarter 2000 compared to \$145 in this quarter. Takings increased in Victoria, Queensland, South Australia, Northern Territory and the Australian Capital Territory.

- For further information about these and related statistics, contact Neil McKellar-Stewart on 07 3222 6364, or the National Information Service on 1300 135 070.

**This page intentionally blank**

98-06-29.sam

# NOTES

## FORTHCOMING ISSUES

<i>ISSUE</i>	<i>RELEASE DATE</i>
December Quarter 2001	27 March 2002

## INTRODUCTION

This publication contains the results of the quarterly Survey of Tourist Accommodation (STA). The STA includes hotels, motels, guest houses and serviced apartments with 15 or more rooms.

## DATA NOTES

Care should be exercised when assessing movements between September 2000 and September 2001 due to the significant events which occurred in these months (the Olympic Games held in Sydney in September 2000 and the attacks on the United States and the cessation of Ansett in September 2001).

The following table shows room nights occupied and room occupancy rates for these two months.

### OCCUPANCY, SEPTEMBER 2000 AND SEPTEMBER 2001

	ROOM NIGHTS OCCUPIED..			ROOM OCCUPANCY RATE..		
	Sept 2000	Sept 2001	% change	Sept 2000	Sept 2001	% point change
	'000	'000		%	%	pts
New South Wales	1 299.9	1 135.8	-12.6	66.8	57.9	-8.9
Victoria	514.1	522.7	1.7	55.0	54.0	-1.0
Queensland	969.9	1 011.3	4.3	61.8	64.1	2.3
South Australia	177.6	181.2	2.0	56.4	57.0	0.6
Western Australia	331.7	327.9	-1.1	58.0	57.4	-0.6
Tasmania	71.2	70.9	-0.4	43.4	43.7	0.3
Northern Territory	113.9	123.5	8.4	60.7	65.8	5.1
Australian Capital Territory	84.3	102.7	21.8	56.0	66.9	10.9
Australia	3 562.6	3 476.0	-2.4	61.0	58.9	-2.1

## SYMBOLS AND OTHER USAGES

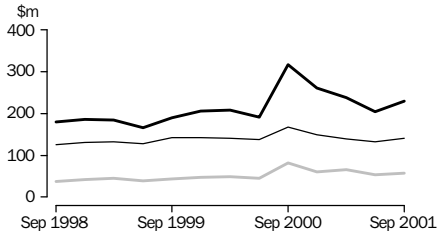
n.a.	not available
n.p.	not available for publication but included in totals where applicable
r	revised
..	not applicable
—	nil or rounded to zero

Dennis Trewin  
Australian Statistician

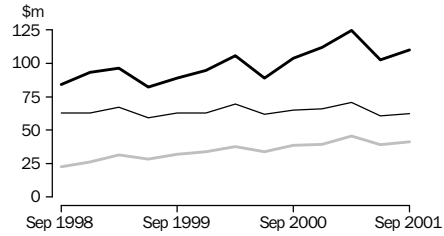
# ACCOMMODATION TAKINGS

Licensed hotels
  Motels and guest houses
  Serviced apartments

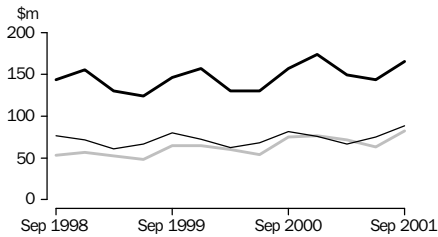
NEW SOUTH WALES



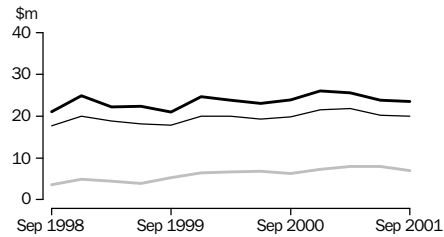
VICTORIA



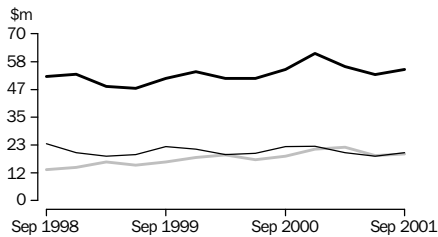
QUEENSLAND



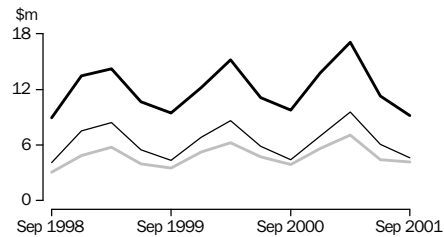
SOUTH AUSTRALIA



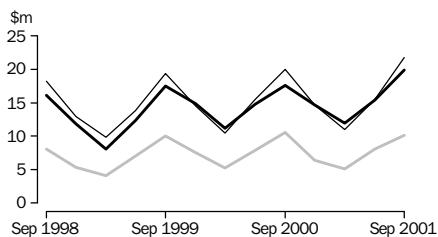
WESTERN AUSTRALIA



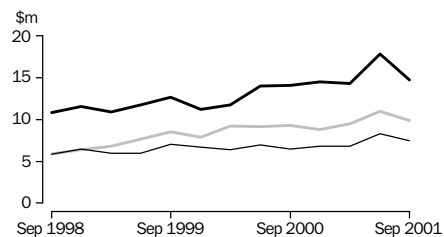
TASMANIA



NORTHERN TERRITORY



AUSTRALIAN CAPITAL TERRITORY



## LIST OF TABLES

Page

1	Summary of hotels, motels, guest houses and serviced apartments	5
	Hotels, motels, guest houses and serviced apartments, by star grading	
2	Australia	6
3	New South Wales	8
4	Victoria	10
5	Queensland	12
6	South Australia	14
7	Western Australia	16
8	Tasmania	18
9	Northern Territory	20
10	Australian Capital Territory	22
	Hotels, motels, guest houses and serviced apartments, by Tourism Region	
11	New South Wales	24
12	Victoria	26
13	Queensland	28
14	South Australia	30
15	Western Australia	31
16	Tasmania	32
17	Northern Territory and Australian Capital Territory	33

# 1

## SUMMARY OF HOTELS, MOTELS, GUEST HOUSES AND SERVICED APARTMENTS (a)—Australia

<i>Period</i>	<i>Establishments</i> no.	<i>Guest rooms</i> no.	<i>Bed spaces</i> no.	<i>Persons employed</i> no.	<i>Room nights occupied</i> '000	<i>Room occupancy rate</i> %	<i>Guest nights</i> '000	<i>Bed occupancy rate</i> %	<i>Guest arrivals</i> '000	<i>Average length of stay</i> days	<i>Takings from accommodation</i> \$'000
<b>LICENSED HOTELS WITH FACILITIES</b>											
<b>2000</b>											
June quarter	767	74 302	197 513	72 517	4 177	62.0	6 668	37.2	2 946	2.3	525 795
September quarter	774	76 607	203 977	73 695	4 447	63.3	7 261	38.8	2 955	2.5	698 985
December quarter	780	76 783	204 109	73 457	4 607	65.3	7 569	40.3	3 109	2.4	677 488
<b>2001</b>											
March quarter	781	77 626	205 020	72 670	4 387	62.9	7 294	39.6	3 034	2.4	636 858
June quarter	778	78 050	205 656	72 226	4 212	59.3	6 854	36.6	2 984	2.3	569 936
September quarter	776	78 241	205 546	71 620	4 506	62.6	7 509	39.7	3 175	2.4	628 608
Year ended September 2000	..	..	..	..	17 251	63.4	28 118	38.8	12 038	2.3	2 356 291
Year ended September 2001	..	..	..	..	17 712	62.5	29 226	39.1	12 302	2.4	2 512 891
<b>MOTELS AND GUEST HOUSES WITH FACILITIES</b>											
<b>2000</b>											
June quarter	2 412	86 091	254 578	31 341	4 176	53.4	7 214	31.2	3 977	1.8	335 620
September quarter	2 412	85 078	251 929	31 342	4 142	53.1	7 286	31.5	3 980	1.8	387 739
December quarter	2 402	84 722	250 170	30 328	4 083	52.4	7 167	31.2	3 955	1.8	363 272
<b>2001</b>											
March quarter	2 400	84 432	248 795	29 917	3 907	51.5	6 982	31.2	3 856	1.8	345 954
June quarter	2 398	84 093	247 928	29 368	3 894	50.9	6 746	29.9	3 788	1.8	336 607
September quarter	2 394	84 021	246 834	29 740	4 113	53.2	7 313	32.2	4 076	1.8	365 585
Year ended September 2000	..	..	..	..	16 784	53.6	29 373	31.6	16 066	1.8	1 408 730
Year ended September 2001	..	..	..	..	15 997	52.0	28 207	31.1	15 675	1.8	1 411 418
<b>SERVICED APARTMENTS</b>											
<b>2000</b>											
June quarter	626	32 437	110 381	11 400	1 647	55.9	3 488	34.8	923	3.8	178 063
September quarter	641	33 394	113 130	11 466	1 860	60.9	4 041	39.0	1 044	3.9	243 388
December quarter	646	33 421	113 267	11 612	1 853	60.3	4 040	38.8	1 143	3.5	226 330
<b>2001</b>											
March quarter	649	34 501	115 146	11 872	1 894	61.1	4 183	40.4	1 142	3.7	235 295
June quarter	649	34 401	114 636	11 532	1 767	56.4	3 752	36.0	1 071	3.5	204 794
September quarter	646	34 467	114 391	11 459	2 000	63.1	4 361	41.4	1 175	3.7	232 329
Year ended September 2000	..	..	..	..	6 915	59.4	14 994	37.5	3 965	3.8	805 333
Year ended September 2001	..	..	..	..	7 515	60.2	16 335	39.1	4 531	3.6	898 748
<b>TOTAL ESTABLISHMENTS</b>											
<b>2000</b>											
June quarter	3 805	192 830	562 472	115 258	10 000	57.1	17 370	34.0	7 847	2.2	1 039 478
September quarter	3 827	195 079	569 036	116 503	10 449	58.4	18 589	35.6	7 979	2.3	1 330 113
December quarter	3 828	194 926	567 546	115 397	10 543	58.8	18 775	36.0	8 207	2.3	1 267 090
<b>2001</b>											
March quarter	3 830	196 559	568 961	114 459	10 189	57.7	18 459	36.1	8 031	2.3	1 218 107
June quarter	3 825	196 544	568 220	113 126	9 873	55.2	17 352	33.6	7 843	2.2	1 111 337
September quarter	3 816	196 729	566 771	112 819	10 619	58.7	19 182	36.8	8 427	2.3	1 226 522
Year ended September 2000	..	..	..	..	40 950	58.4	72 486	35.3	32 069	2.3	4 570 355
Year ended September 2001	..	..	..	..	41 223	57.6	73 768	35.6	32 508	2.3	4 823 057

(a) Comprising establishments with 15 or more rooms or units. See Explanatory Notes, paragraph 7.

# 2

## HOTELS, MOTELS, GUEST HOUSES AND SERVICED APARTMENTS (a)—Australia

### STAR GRADING .....

<i>Period</i>	<i>Licensed hotels with facilities</i>	<i>Motels and guest houses</i>	<i>Serviced apartments</i>	1	2	3	4	5	<i>Ungraded</i>	<i>Total</i>
<b>ESTABLISHMENTS, CAPACITY AND EMPLOYMENT (number)</b>										
<b>September quarter 2000</b>										
Establishments	774	2 412	641	60	473	1 859	862	93	480	3 827
Guest rooms	76 607	85 078	33 394	1 969	13 593	71 543	67 960	22 402	17 612	195 079
Bed spaces	203 977	251 929	113 130	6 345	39 939	212 809	200 424	58 707	50 812	569 036
Persons employed	73 695	31 342	11 466	780	5 553	28 166	39 694	35 322	6 988	116 503
<b>September quarter 2001</b>										
Establishments	776	2 394	646	61	455	1 867	903	98	432	3 816
Guest rooms	78 241	84 021	34 467	1 962	13 280	71 330	71 687	23 552	14 918	196 729
Bed spaces	205 546	246 834	114 391	6 315	39 027	211 414	206 584	59 879	43 552	566 771
Persons employed	71 620	29 740	11 459	831	5 269	27 098	38 889	34 678	6 054	112 819
<b>ROOM NIGHTS OCCUPIED ('000)</b>										
<b>2000</b>										
<i>September quarter</i>	4 446.6	4 142.4	1 859.7	83.1	560.0	3 587.0	4 029.3	1 398.3	790.9	10 448.6
<b>2001</b>										
July	1 526.4	1 385.8	691.0	26.3	185.6	1 218.8	1 453.9	484.2	234.5	3 603.2
August	1 540.9	1 342.9	655.9	28.2	173.4	1 174.0	1 439.8	494.5	229.9	3 539.7
September	1 439.0	1 383.8	653.2	23.3	183.0	1 219.2	1 369.0	455.5	225.9	3 476.0
<i>September quarter</i>	4 506.3	4 112.6	2 000.1	77.8	542.0	3 612.0	4 262.7	1 434.2	690.4	10 619.0
<b>ROOM OCCUPANCY RATES (%)</b>										
<b>2000</b>										
<i>September quarter</i>	63.3	53.1	60.9	46.3	44.9	54.6	64.6	67.9	49.9	58.4
<b>2001</b>										
July	62.9	53.2	64.7	43.2	45.1	55.1	65.4	66.3	50.7	59.1
August	63.5	51.6	61.4	46.3	42.1	53.1	64.8	67.7	49.8	58.0
September	61.3	54.9	63.2	39.7	46.0	57.0	63.7	64.5	50.6	58.9
<i>September quarter</i>	62.6	53.2	63.1	43.1	44.4	55.0	64.6	66.2	50.4	58.7
<b>GUEST NIGHTS ('000)</b>										
<b>2000</b>										
<i>September quarter</i>	7 261.4	7 286.2	4 041.3	180.7	1 006.1	6 572.7	7 086.6	2 265.4	1 477.4	18 588.8
<b>2001</b>										
July	2 588.1	2 514.3	1 543.3	55.7	345.5	2 320.1	2 656.1	813.3	455.1	6 645.7
August	2 536.0	2 323.4	1 393.4	62.7	303.5	2 131.0	2 516.7	809.8	429.2	6 252.7
September	2 384.4	2 475.2	1 424.1	41.7	329.3	2 274.0	2 460.9	752.0	425.9	6 283.7
<i>September quarter</i>	7 508.5	7 312.8	4 360.8	160.0	978.3	6 725.0	7 633.7	2 375.1	1 310.1	19 182.2
<b>BED OCCUPANCY RATES (%)</b>										
<b>2000</b>										
<i>September quarter</i>	38.8	31.5	39.0	31.2	27.4	33.6	38.5	42.0	32.1	35.6
<b>2001</b>										
July	40.6	32.9	43.5	28.4	28.6	35.4	41.5	43.8	33.7	37.8
August	39.8	30.4	39.3	32.0	25.1	32.5	39.3	43.6	31.8	35.6
September	38.7	33.4	41.5	22.0	28.2	35.9	39.7	41.9	32.7	37.0
<i>September quarter</i>	39.7	32.2	41.4	27.5	27.3	34.6	40.2	43.1	32.7	36.8

(a) Comprising establishments with 15 or more rooms or units. See Explanatory Notes, paragraph 7.

## STAR GRADING .....

Period	Licensed hotels with facilities	Motels and guest houses	Serviced apartments	1	2	3	4	5	Ungraded	Total
GUEST ARRIVALS ('000)										
<b>2000</b>										
September quarter	2 954.8	3 979.8	1 044.3	82.0	590.7	3 167.5	2 764.4	821.7	552.6	7 978.9
<b>2001</b>										
July	1 078.3	1 386.8	405.9	25.1	196.8	1 128.9	1 047.5	309.6	163.1	2 870.9
August	1 087.7	1 297.3	380.5	26.9	176.3	1 062.1	1 027.3	315.5	157.4	2 765.5
September	1 009.4	1 392.1	389.1	21.3	190.5	1 142.4	993.1	283.6	159.7	2 790.7
September quarter	3 175.5	4 076.2	1 175.5	73.3	563.6	3 333.4	3 067.8	908.8	480.2	8 427.1
AVERAGE LENGTH OF STAY (days)										
<b>2000</b>										
September quarter	2.5	1.8	3.9	2.2	1.7	2.1	2.6	2.8	2.7	2.3
<b>2001</b>										
September quarter	2.4	1.8	3.7	2.2	1.7	2.0	2.5	2.6	2.7	2.3
TAKINGS FROM ACCOMMODATION (\$'000)										
<b>2000</b>										
September quarter	698 985	387 739	243 388	7 169	38 122	348 540	548 363	298 738	89 181	1 330 113
<b>2001</b>										
July	211 698	124 669	80 760	1 991	12 882	111 545	178 763	88 407	23 539	417 127
August	214 595	119 801	75 341	2 431	11 971	105 837	175 846	90 679	22 973	409 737
September	202 315	121 116	76 228	1 553	12 180	108 152	168 662	87 660	21 451	399 658
September quarter	628 608	365 585	232 329	5 976	37 033	325 534	523 271	266 745	67 963	1 226 522
AVERAGE TAKINGS PER ROOM NIGHT OCCUPIED (\$)										
<b>2000</b>										
September quarter	157.2	93.6	130.9	86.2	68.1	97.2	136.1	213.7	112.8	127.3
<b>2001</b>										
July	138.7	90.0	116.9	75.7	69.4	91.5	123.0	182.6	100.4	115.8
August	139.3	89.2	114.9	86.3	69.0	90.2	122.1	183.4	99.9	115.8
September	140.6	87.5	116.7	66.5	66.6	88.7	123.2	192.4	94.9	115.0
September quarter	139.5	88.9	116.2	76.8	68.3	90.1	122.8	186.0	98.4	115.5
AVERAGE TAKINGS PER AVAILABLE ROOM NIGHT (\$)										
<b>2000</b>										
September quarter	99.5	49.7	79.7	39.9	30.5	53.1	87.9	145.0	56.3	74.4
<b>2001</b>										
July	87.3	47.9	75.6	32.7	31.3	50.4	80.4	121.1	50.9	68.4
August	88.5	46.0	70.5	40.0	29.1	47.9	79.1	124.2	49.7	67.2
September	86.2	48.1	73.7	26.4	30.6	50.5	78.4	124.1	48.0	67.7
September quarter	87.3	47.3	73.3	33.1	30.3	49.6	79.3	123.1	49.6	67.8

(a) Comprising establishments with 15 or more rooms or units. See Explanatory Notes, paragraph 7.



## STAR GRADING .....

<i>Period</i>	<i>Licensed hotels with facilities</i>	<i>Motels and guest houses</i>	<i>Serviced apartments</i>	1	2	3	4	5	<i>Ungraded</i>	<i>Total</i>
ESTABLISHMENTS, CAPACITY AND EMPLOYMENT (number)										
<b>September quarter 2000</b>										
Establishments	191	1 002	133	28	177	698	213	23	187	1 326
Guest rooms	24 241	33 432	7 327	1 077	4 939	25 979	19 540	6 226	7 239	65 000
Bed spaces	60 291	99 899	24 854	3 915	14 832	76 421	54 323	14 363	21 190	185 044
Persons employed	22 239	12 505	2 728	329	1 795	10 076	12 848	9 811	2 613	37 472
<b>September quarter 2001</b>										
Establishments	199	991	134	30	177	707	221	26	163	1 324
Guest rooms	25 028	32 787	7 600	1 145	5 139	25 882	21 107	6 876	5 266	65 415
Bed spaces	61 871	96 848	24 502	4 137	15 120	75 527	57 447	15 209	15 781	183 221
Persons employed	20 494	11 465	2 709	384	1 751	9 022	12 119	9 516	1 876	34 668
ROOM NIGHTS OCCUPIED ('000)										
<b>2000</b>										
<i>September quarter</i>	1 519.3	1 630.8	393.2	49.5	212.8	1 347.9	1 215.1	390.2	327.8	3 543.3
<b>2001</b>										
July	514.8	516.1	144.7	16.4	75.0	437.6	432.4	137.7	76.5	1 175.6
August	497.6	490.1	130.1	18.0	69.0	410.9	415.7	133.1	71.1	1 117.8
September	468.8	534.1	132.9	12.8	74.3	449.8	402.5	128.0	68.3	1 135.8
<i>September quarter</i>	1 481.2	1 540.3	407.7	47.2	218.3	1 298.4	1 250.6	398.8	215.9	3 429.2
ROOM OCCUPANCY RATES (%)										
<b>2000</b>										
<i>September quarter</i>	68.5	53.3	59.9	50.0	47.0	56.6	67.8	68.1	51.9	59.7
<b>2001</b>										
July	66.3	50.8	61.4	46.2	47.1	54.5	66.1	64.6	46.9	58.0
August	64.2	48.2	55.2	50.7	43.3	51.2	63.5	62.4	43.6	55.1
September	62.5	54.3	58.3	37.4	48.2	57.9	63.6	62.1	43.5	57.9
<i>September quarter</i>	64.4	51.1	58.3	44.8	46.2	54.5	64.4	63.0	44.7	57.0
GUEST NIGHTS ('000)										
<b>2000</b>										
<i>September quarter</i>	2 369.0	2 905.3	759.0	123.7	389.6	2 395.7	1 929.9	564.4	630.1	6 033.3
<b>2001</b>										
July	877.2	947.9	297.0	39.0	140.7	829.8	736.6	224.4	151.7	2 122.1
August	824.4	849.0	255.5	45.6	123.0	733.2	674.2	212.8	140.1	1 928.9
September	766.9	966.9	262.4	23.8	136.8	833.3	673.1	203.2	126.1	1 996.2
<i>September quarter</i>	2 468.5	2 763.8	814.9	108.4	400.4	2 396.3	2 083.8	640.4	417.9	6 047.2
BED OCCUPANCY RATES (%)										
<b>2000</b>										
<i>September quarter</i>	42.9	31.8	33.7	34.3	28.7	34.2	38.7	42.7	33.5	35.7
<b>2001</b>										
July	45.7	31.6	39.1	30.4	30.0	35.4	41.4	47.6	31.0	37.4
August	43.0	28.3	33.6	35.6	26.2	31.3	37.9	45.1	28.7	34.0
September	41.4	33.3	35.7	19.1	30.1	36.8	39.1	44.5	26.8	36.3
<i>September quarter</i>	43.4	31.0	36.1	28.5	28.8	34.5	39.4	45.8	28.9	35.9

(a) Comprising establishments with 15 or more rooms or units. See Explanatory Notes, paragraph 7.

# 3

## HOTELS, MOTELS, GUEST HOUSES AND SERVICED APARTMENTS (a)—NSW *continued*

### STAR GRADING .....

Period	Licensed hotels with facilities	Motels and guest houses	Serviced apartments	1	2	3	4	5	Ungraded	Total
GUEST ARRIVALS ('000)										
<b>2000</b>										
September quarter	861.9	1 672.8	213.3	50.1	240.6	1 222.3	798.3	191.4	245.3	2 748.0
<b>2001</b>										
July	328.8	572.3	89.1	15.6	83.0	446.3	307.9	79.0	58.4	990.3
August	329.8	516.2	81.7	17.3	74.1	400.9	301.2	78.8	55.4	927.8
September	301.5	585.3	82.6	11.2	82.3	459.2	289.7	73.6	53.5	969.4
September quarter	960.1	1 673.9	253.5	44.1	239.4	1 306.4	898.8	231.3	167.3	2 887.5
AVERAGE LENGTH OF STAY (days)										
<b>2000</b>										
September quarter	2.7	1.7	3.6	2.5	1.6	2.0	2.4	2.9	2.6	2.2
<b>2001</b>										
September quarter	2.6	1.7	3.2	2.5	1.7	1.8	2.3	2.8	2.5	2.1
TAKINGS FROM ACCOMMODATION (\$'000)										
<b>2000</b>										
September quarter	317 606	167 990	80 720	5 137	15 360	155 801	216 231	127 040	46 747	566 315
<b>2001</b>										
July	79 914	47 573	20 664	1 415	5 320	42 169	59 203	31 315	8 730	148 151
August	76 240	44 855	18 616	1 815	4 899	38 662	56 045	30 013	8 276	139 711
September	73 955	48 271	18 567	910	4 925	41 492	55 211	31 503	6 752	140 792
September quarter	230 109	140 699	57 846	4 140	15 144	122 323	170 458	92 830	23 759	428 654
AVERAGE TAKINGS PER ROOM NIGHT OCCUPIED (\$)										
<b>2000</b>										
September quarter	209.0	103.0	205.3	103.8	72.2	115.6	178.0	325.6	142.6	159.8
<b>2001</b>										
July	155.2	92.2	142.8	86.3	70.9	96.4	136.9	227.4	114.1	126.0
August	153.2	91.5	143.1	100.9	71.0	94.1	134.8	225.5	116.4	125.0
September	157.8	90.4	139.7	70.9	66.3	92.2	137.2	246.0	98.8	124.0
September quarter	155.4	91.3	141.9	87.7	69.4	94.2	136.3	232.8	110.0	125.0
AVERAGE TAKINGS PER AVAILABLE ROOM NIGHT (\$)										
<b>2000</b>										
September quarter	143.2	55.0	123.0	51.8	33.9	65.4	120.6	221.8	74.0	95.5
<b>2001</b>										
July	103.0	46.8	87.7	39.9	33.4	52.6	90.5	146.9	53.5	73.1
August	98.3	44.1	79.0	51.1	30.8	48.2	85.7	140.8	50.8	68.9
September	98.6	49.1	81.4	26.5	31.9	53.4	87.2	152.7	43.0	71.8
September quarter	100.0	46.6	82.7	39.3	32.0	51.4	87.8	146.7	49.2	71.2

(a) Comprising establishments with 15 or more rooms or units. See Explanatory Notes, paragraph 7.

## 4

## HOTELS, MOTELS, GUEST HOUSES AND SERVICED APARTMENTS (a)—Vic.

## STAR GRADING .....

Period	Licensed hotels with facilities	Motels and guest houses	Serviced apartments	1	2	3	4	5	Ungraded	Total
<b>ESTABLISHMENTS, CAPACITY AND EMPLOYMENT (number)</b>										
<b>September quarter 2000</b>										
Establishments	126	500	77	8	75	372	188	16	44	703
Guest rooms	11 371	15 655	4 132	270	2 000	11 648	12 124	3 577	1 539	31 158
Bed spaces	27 301	45 778	12 640	776	5 964	33 506	32 650	8 019	4 804	85 719
Persons employed	14 269	5 895	1 620	73	797	4 371	6 925	8 945	673	21 784
<b>September quarter 2001</b>										
Establishments	129	495	83	8	67	369	201	20	42	707
Guest rooms	12 239	15 422	4 613	259	1 735	11 608	12 814	4 186	1 672	32 274
Bed spaces	28 730	44 514	14 154	732	5 263	33 220	33 914	9 223	5 046	87 398
Persons employed	14 630	5 592	1 789	85	705	4 356	6 728	9 273	864	22 011
<b>ROOM NIGHTS OCCUPIED ('000)</b>										
<b>2000</b>										
September quarter	674.0	670.5	264.3	9.1	62.6	515.8	714.0	230.6	76.7	1 608.7
<b>2001</b>										
July	246.3	221.9	102.0	3.2	14.8	178.4	256.4	89.4	27.9	570.1
August	249.1	210.6	96.7	3.2	14.0	169.8	248.4	93.0	28.1	556.4
September	220.6	212.0	90.1	3.5	15.2	170.3	226.4	80.6	26.6	522.7
September quarter	716.0	644.5	288.7	9.9	44.0	518.5	731.2	263.0	82.6	1 649.2
<b>ROOM OCCUPANCY RATES (%)</b>										
<b>2000</b>										
September quarter	64.5	46.6	69.5	39.0	34.0	48.2	64.0	70.1	54.5	56.2
<b>2001</b>										
July	64.9	46.4	71.3	40.1	27.6	49.6	64.5	68.9	53.8	57.0
August	65.7	44.1	67.6	40.0	26.0	47.2	62.5	71.6	54.2	55.6
September	60.1	45.8	65.1	45.3	29.2	48.9	58.9	64.2	53.0	54.0
September quarter	63.6	45.4	68.0	41.8	27.6	48.5	62.0	68.3	53.7	55.5
<b>GUEST NIGHTS ('000)</b>										
<b>2000</b>										
September quarter	1 015.5	1 163.8	484.4	12.1	116.6	946.9	1 127.4	324.5	136.3	2 663.8
<b>2001</b>										
July	387.6	401.8	202.4	5.4	28.4	337.7	433.5	132.6	54.3	991.8
August	378.2	364.7	180.7	5.2	26.5	309.4	398.9	132.9	50.8	923.6
September	338.4	372.8	170.5	5.9	27.7	312.4	370.7	116.7	48.3	881.7
September quarter	1 104.3	1 139.3	553.6	16.5	82.5	959.5	1 203.1	382.3	153.4	2 797.1
<b>BED OCCUPANCY RATES (%)</b>										
<b>2000</b>										
September quarter	40.5	27.7	41.7	18.2	21.3	30.8	37.5	44.0	31.0	33.8
<b>2001</b>										
July	43.5	29.1	46.1	23.8	17.4	32.8	41.2	46.4	34.7	36.6
August	42.5	26.4	41.2	22.9	16.2	30.0	37.9	46.5	32.4	34.1
September	39.3	27.9	40.2	26.7	17.5	31.3	36.4	42.2	31.9	33.6
September quarter	41.8	27.8	42.5	24.4	17.0	31.4	38.6	45.0	33.0	34.8

(a) Comprising establishments with 15 or more rooms or units. See Explanatory Notes, paragraph 7.

# 4

## HOTELS, MOTELS, GUEST HOUSES AND SERVICED APARTMENTS (a)—Vic. *continued*

### STAR GRADING .....

Period	Licensed hotels with facilities	Motels and guest houses	Serviced apartments	1	2	3	4	5	Ungraded	Total
GUEST ARRIVALS ('000)										
<b>2000</b>										
September quarter	467.9	665.5	158.6	9.3	69.0	485.0	539.8	139.7	49.2	1 292.0
<b>2001</b>										
July	186.6	223.1	62.0	4.4	16.8	168.9	201.6	60.2	19.9	471.8
August	188.3	208.4	59.9	4.2	15.4	160.4	195.3	62.1	19.1	456.5
September	166.4	219.0	52.8	4.1	16.4	164.3	181.2	54.8	17.4	438.2
September quarter	541.3	650.5	174.7	12.8	48.6	493.6	578.1	177.1	56.4	1 366.5
AVERAGE LENGTH OF STAY (days)										
<b>2000</b>										
September quarter	2.2	1.7	3.1	1.3	1.7	2.0	2.1	2.3	2.8	2.1
<b>2001</b>										
September quarter	2.0	1.8	3.2	1.3	1.7	1.9	2.1	2.2	2.7	2.0
TAKINGS FROM ACCOMMODATION (\$'000)										
<b>2000</b>										
September quarter	103 846	64 951	38 634	582	4 431	47 664	94 884	49 201	10 668	207 430
<b>2001</b>										
July	38 239	22 127	14 777	197	993	17 379	34 390	18 212	3 972	75 143
August	38 133	20 723	13 805	195	928	16 408	32 783	18 400	3 947	72 661
September	33 920	19 664	12 752	238	996	15 358	29 187	16 802	3 756	66 337
September quarter	110 292	62 515	41 335	630	2 917	49 145	96 361	53 415	11 674	214 141
AVERAGE TAKINGS PER ROOM NIGHT OCCUPIED (\$)										
<b>2000</b>										
September quarter	154.1	96.9	146.2	64.1	70.8	92.4	132.9	213.3	139.2	128.9
<b>2001</b>										
July	155.3	99.7	144.9	61.4	66.9	97.4	134.2	203.7	142.3	131.8
August	153.1	98.4	142.8	60.9	66.4	96.6	132.0	198.0	140.5	130.6
September	153.7	92.8	141.6	67.5	65.6	90.2	128.9	208.3	141.1	126.9
September quarter	154.0	97.0	143.2	63.4	66.3	94.8	131.8	203.1	141.3	129.8
AVERAGE TAKINGS PER AVAILABLE ROOM NIGHT (\$)										
<b>2000</b>										
September quarter	99.4	45.2	101.6	25.0	24.1	44.5	85.1	149.5	75.8	72.5
<b>2001</b>										
July	100.8	46.3	103.3	24.6	18.5	48.3	86.6	140.3	76.6	75.1
August	100.5	43.3	96.5	24.3	17.2	45.6	82.5	141.8	76.1	72.6
September	92.4	42.5	92.1	30.6	19.1	44.1	75.9	133.8	74.9	68.5
September quarter	98.0	44.1	97.4	26.5	18.3	46.0	81.7	138.7	75.9	72.1

(a) Comprising establishments with 15 or more rooms or units. See Explanatory Notes, paragraph 7.

## STAR GRADING .....

Period	Licensed	Motels	Serviced	STAR GRADING					Ungraded	Total
	hotels with facilities	and guest houses	apartments	1	2	3	4	5		
ESTABLISHMENTS, CAPACITY AND EMPLOYMENT (number)										
<b>September quarter 2000</b>										
Establishments	172	513	273	10	100	414	287	32	115	958
Guest rooms	20 668	18 370	13 517	251	2 452	15 317	22 019	8 167	4 349	52 555
Bed spaces	63 543	54 698	46 638	692	7 396	48 782	69 879	25 526	12 604	164 879
Persons employed	20 280	6 510	4 159	120	1 178	5 928	10 720	11 385	1 618	30 949
<b>September quarter 2001</b>										
Establishments	167	513	272	9	96	415	297	32	103	952
Guest rooms	20 708	18 392	13 496	208	2 417	15 327	22 729	8 093	3 822	52 596
Bed spaces	62 924	54 394	46 232	572	7 359	48 649	70 605	24 732	11 633	163 550
Persons employed	20 343	6 498	3 956	97	1 108	5 881	10 961	11 397	1 353	30 797
ROOM NIGHTS OCCUPIED ('000)										
<b>2000</b>										
September quarter	1 219.2	1 013.8	749.4	10.6	106.3	871.0	1 293.5	491.1	209.9	2 982.4
<b>2001</b>										
July	422.3	372.3	281.5	2.8	37.9	312.5	481.6	167.6	73.7	1 076.0
August	425.5	366.9	275.9	2.9	35.9	303.6	483.6	169.7	72.6	1 068.3
September	392.8	346.1	272.3	3.0	34.6	292.5	446.6	161.7	72.9	1 011.3
September quarter	1 240.7	1 085.3	829.8	8.7	108.4	908.5	1 411.8	499.0	219.2	3 155.7
ROOM OCCUPANCY RATES (%)										
<b>2000</b>										
September quarter	64.4	60.0	60.3	46.0	47.1	61.8	64.1	65.4	52.5	61.8
<b>2001</b>										
July	65.8	65.3	67.3	43.2	50.6	65.8	68.4	66.8	62.2	66.0
August	66.3	64.3	66.0	45.1	47.9	63.9	68.6	67.7	61.3	65.5
September	63.2	62.7	67.3	48.5	47.7	63.6	65.5	66.6	63.6	64.1
September quarter	65.1	64.1	66.8	45.6	48.7	64.4	67.5	67.0	62.3	65.2
GUEST NIGHTS ('000)										
<b>2000</b>										
September quarter	2 305.5	1 803.5	1 869.9	20.6	192.2	1 698.5	2 713.3	946.4	407.9	5 978.9
<b>2001</b>										
July	794.1	682.0	704.1	5.4	70.8	626.9	1 005.7	319.8	151.5	2 180.1
August	784.6	648.1	655.7	5.7	62.7	587.9	975.3	316.4	140.4	2 088.4
September	731.6	630.6	672.9	5.7	61.8	584.3	927.1	304.5	151.7	2 035.1
September quarter	2 310.2	1 960.7	2 032.8	16.7	195.2	1 799.2	2 908.2	940.7	443.6	6 303.7
BED OCCUPANCY RATES (%)										
<b>2000</b>										
September quarter	39.6	35.8	43.6	32.3	28.2	37.8	42.4	40.3	35.2	39.5
<b>2001</b>										
July	40.7	40.4	49.1	30.2	31.0	41.6	45.9	41.7	42.0	43.0
August	40.2	38.4	45.8	31.9	27.5	39.0	44.6	41.3	38.9	41.2
September	38.8	38.6	48.5	33.2	28.0	40.0	43.8	41.0	43.5	41.5
September quarter	39.9	39.2	47.8	31.8	28.8	40.2	44.8	41.3	41.5	41.9

(a) Comprising establishments with 15 or more rooms or units. See Explanatory Notes, paragraph 7.

# 5

## HOTELS, MOTELS, GUEST HOUSES AND SERVICED APARTMENTS (a)—Q1d *continued*

### STAR GRADING .....

Period	Licensed hotels with facilities	Motels and guest houses	Serviced apartments	1	2	3	4	5	Ungraded	Total
GUEST ARRIVALS ('000)										
<b>2000</b>										
September quarter	829.0	879.6	383.8	7.3	112.0	690.8	848.3	306.3	127.7	2 092.4
<b>2001</b>										
July	294.2	330.0	152.0	1.7	41.0	253.7	322.4	111.1	46.4	776.2
August	288.0	316.9	145.4	1.9	35.8	244.1	313.2	111.4	44.0	750.3
September	264.9	313.5	153.4	1.8	35.1	245.2	301.6	101.7	46.3	731.8
September quarter	847.1	960.5	450.8	5.4	111.9	743.0	937.2	324.2	136.7	2 258.4
AVERAGE LENGTH OF STAY (days)										
<b>2000</b>										
September quarter	2.8	2.1	4.9	2.8	1.7	2.5	3.2	3.1	3.2	2.9
<b>2001</b>										
September quarter	2.7	2.0	4.5	3.1	1.7	2.4	3.1	2.9	3.2	2.8
TAKINGS FROM ACCOMMODATION (\$'000)										
<b>2000</b>										
September quarter	157 175	81 471	75 282	559	6 566	70 608	138 577	78 924	18 693	313 928
<b>2001</b>										
July	54 380	30 478	27 733	155	2 527	25 676	51 056	26 657	6 520	112 591
August	57 506	29 868	26 542	159	2 325	24 568	51 874	28 584	6 406	113 916
September	53 969	28 053	28 024	162	2 313	24 219	49 270	27 403	6 680	110 046
September quarter	165 855	88 399	82 300	476	7 165	74 463	152 201	82 644	19 605	336 553
AVERAGE TAKINGS PER ROOM NIGHT OCCUPIED (\$)										
<b>2000</b>										
September quarter	128.9	80.4	100.5	52.7	61.8	81.1	107.1	160.7	89.1	105.3
<b>2001</b>										
July	128.8	81.9	98.5	55.6	66.6	82.2	106.0	159.1	88.5	104.6
August	135.1	81.4	96.2	54.8	64.7	80.9	107.3	168.4	88.2	106.6
September	137.4	81.1	102.9	53.5	66.9	82.8	110.3	169.5	91.6	108.8
September quarter	133.7	81.5	99.2	54.6	66.1	82.0	107.8	165.6	89.4	106.6
AVERAGE TAKINGS PER AVAILABLE ROOM NIGHT (\$)										
<b>2000</b>										
September quarter	83.0	48.2	60.5	24.2	29.1	50.1	68.6	105.2	46.7	65.0
<b>2001</b>										
July	84.7	53.5	66.3	24.0	33.7	54.0	72.5	106.3	55.0	69.1
August	89.6	52.4	63.4	24.7	31.0	51.7	73.6	113.9	54.1	69.9
September	86.9	50.8	69.2	25.9	31.9	52.7	72.3	112.9	58.3	69.7
September quarter	87.1	52.2	66.3	24.9	32.2	52.8	72.8	111.0	55.8	69.6

(a) Comprising establishments with 15 or more rooms or units. See Explanatory Notes, paragraph 7.

## STAR GRADING .....

Period	Licensed hotels with facilities	Motels and guest houses	Serviced apartments	1	2	3	4	5	Ungraded	Total
ESTABLISHMENTS, CAPACITY AND EMPLOYMENT (number)										
<b>September quarter 2000</b>										
Establishments	60	147	26	6	52	117	44	4	10	233
Guest rooms	4 070	5 218	1 211	146	1 503	4 511	2 802	1 263	274	10 499
Bed spaces	10 206	15 785	4 268	375	4 207	13 244	8 996	2 572	865	30 259
Persons employed	3 898	1 996	453	135	689	2 204	1 891	1 295	133	6 347
<b>September quarter 2001</b>										
Establishments	61	146	27	6	51	116	47	4	10	234
Guest rooms	4 078	5 231	1 293	135	1 493	4 446	2 997	1 263	268	10 602
Bed spaces	10 115	15 765	4 517	320	4 206	12 971	9 581	2 572	747	30 397
Persons employed	3 973	2 050	478	136	792	2 249	1 920	1 262	142	6 501
ROOM NIGHTS OCCUPIED ('000)										
<b>2000</b>										
September quarter	209.6	242.9	63.4	3.1	59.1	212.0	148.0	81.9	11.9	516.0
<b>2001</b>										
July	70.6	77.9	25.2	0.7	18.6	69.9	53.2	27.4	3.8	173.6
August	69.1	76.1	21.9	0.7	18.3	66.0	51.6	27.2	3.3	167.1
September	71.3	85.5	24.4	1.2	21.3	74.0	55.1	25.6	4.0	181.2
September quarter	211.1	239.4	71.5	2.6	58.2	209.9	159.9	80.2	11.1	521.9
ROOM OCCUPANCY RATES (%)										
<b>2000</b>										
September quarter	56.3	50.6	56.9	23.2	42.7	51.3	57.4	70.4	47.3	53.5
<b>2001</b>										
July	55.8	48.0	62.8	16.3	40.1	50.7	57.3	70.1	46.0	52.8
August	54.7	46.9	54.6	17.5	39.6	47.9	55.6	69.4	39.5	50.8
September	58.3	54.5	62.8	28.4	47.5	55.5	61.3	67.6	50.2	57.0
September quarter	56.3	49.7	60.1	20.6	42.4	51.3	58.0	69.0	45.2	53.5
GUEST NIGHTS ('000)										
<b>2000</b>										
September quarter	308.9	408.0	125.0	5.3	102.4	358.7	243.5	106.0	26.2	841.9
<b>2001</b>										
July	103.6	135.2	50.0	1.1	31.2	123.5	89.5	36.6	7.0	288.8
August	98.6	122.6	41.1	1.2	29.7	109.8	80.4	34.8	6.5	262.3
September	107.3	147.0	47.9	2.1	36.4	129.0	92.6	34.2	8.0	302.3
September quarter	309.6	404.8	139.0	4.3	97.3	362.3	262.5	105.5	21.4	853.4
BED OCCUPANCY RATES (%)										
<b>2000</b>										
September quarter	33.2	28.1	31.8	15.2	26.5	29.6	29.4	44.8	32.9	30.3
<b>2001</b>										
July	33.1	27.7	35.7	10.9	23.9	30.7	30.1	45.8	30.1	30.6
August	31.4	25.1	29.3	11.9	22.7	27.3	27.1	43.6	27.9	27.8
September	35.4	31.1	35.4	21.4	28.9	33.2	32.2	44.3	35.7	33.1
September quarter	33.3	27.9	33.4	14.7	25.1	30.4	29.8	44.6	31.2	30.5

(a) Comprising establishments with 15 or more rooms or units. See Explanatory Notes, paragraph 7.

## STAR GRADING .....

<i>Period</i>	<i>Licensed hotels with facilities</i>	<i>Motels and guest houses</i>	<i>Serviced apartments</i>	<i>1</i>	<i>2</i>	<i>3</i>	<i>4</i>	<i>5</i>	<i>Ungraded</i>	<i>Total</i>
GUEST ARRIVALS ('000)										
<b>2000</b>										
<i>September quarter</i>	165.9	236.8	39.3	3.5	63.1	202.6	110.5	53.9	8.4	442.1
<b>2001</b>										
<i>July</i>	53.3	78.1	15.1	0.7	17.6	67.6	40.5	17.5	2.6	146.5
<i>August</i>	54.7	73.0	13.9	0.8	17.9	62.3	39.9	18.1	2.6	141.6
<i>September</i>	57.3	86.3	15.8	1.3	22.1	73.0	43.2	16.2	3.6	159.4
<i>September quarter</i>	165.3	237.4	44.8	2.8	57.6	202.9	123.6	51.8	8.8	447.5
AVERAGE LENGTH OF STAY (days)										
<b>2000</b>										
<i>September quarter</i>	1.9	1.7	3.2	1.5	1.6	1.8	2.2	2.0	3.1	1.9
<b>2001</b>										
<i>September quarter</i>	1.9	1.7	3.1	1.5	1.7	1.8	2.1	2.0	2.4	1.9
TAKINGS FROM ACCOMMODATION (\$'000)										
<b>2000</b>										
<i>September quarter</i>	23 960	19 897	6 252	160	3 305	16 215	17 215	12 300	915	50 110
<b>2001</b>										
<i>July</i>	7 860	6 533	2 505	34	1 117	5 546	6 001	3 892	307	16 898
<i>August</i>	7 656	6 335	2 122	42	1 132	5 092	5 832	3 771	243	16 113
<i>September</i>	7 981	7 058	2 392	57	1 262	5 793	6 272	3 726	321	17 432
<i>September quarter</i>	23 498	19 926	7 019	134	3 512	16 432	18 105	11 389	871	50 442
AVERAGE TAKINGS PER ROOM NIGHT OCCUPIED (\$)										
<b>2000</b>										
<i>September quarter</i>	114.3	81.9	98.6	51.3	56.0	76.5	116.3	150.3	76.8	97.1
<b>2001</b>										
<i>July</i>	111.4	83.9	99.4	50.4	60.1	79.3	112.8	141.8	80.3	97.3
<i>August</i>	110.7	83.3	96.9	57.6	61.7	77.2	113.0	138.8	74.1	96.4
<i>September</i>	111.9	82.6	98.1	49.7	59.4	78.3	113.8	145.4	79.5	96.2
<i>September quarter</i>	111.3	83.2	98.2	52.2	60.4	78.3	113.2	142.0	78.2	96.6
AVERAGE TAKINGS PER AVAILABLE ROOM NIGHT (\$)										
<b>2000</b>										
<i>September quarter</i>	64.4	41.4	56.1	11.9	23.9	39.3	66.8	105.9	36.3	52.0
<b>2001</b>										
<i>July</i>	62.2	40.3	62.5	8.2	24.1	40.2	64.6	99.4	37.0	51.4
<i>August</i>	60.6	39.1	52.9	10.1	24.5	36.9	62.8	96.3	29.3	49.0
<i>September</i>	65.2	45.0	61.7	14.1	28.2	43.4	69.8	98.3	39.9	54.8
<i>September quarter</i>	62.6	41.4	59.0	10.8	25.6	40.2	65.7	98.0	35.3	51.7

(a) Comprising establishments with 15 or more rooms or units. See Explanatory Notes, paragraph 7.



## 7

## HOTELS, MOTELS, GUEST HOUSES AND SERVICED APARTMENTS (a)—WA

## STAR GRADING .....

<i>Period</i>	<i>Licensed hotels with facilities</i>	<i>Motels and guest houses</i>	<i>Serviced apartments</i>	<i>1 and Ungraded</i>	<i>2</i>	<i>3</i>	<i>4</i>	<i>5</i>	<i>Total</i>
<b>ESTABLISHMENTS, CAPACITY AND EMPLOYMENT (number)</b>									
<b>September quarter 2000</b>									
Establishments	133	124	69	91	26	131	64	14	326
Guest rooms	9 510	5 824	3 718	2 951	919	7 423	5 365	2 394	19 052
Bed spaces	23 972	15 748	12 666	7 563	2 312	20 417	15 578	6 516	52 386
Persons employed	6 906	2 037	1 242	1 530	466	2 783	2 855	2 551	10 185
<b>September quarter 2001</b>									
Establishments	130	125	68	84	23	135	69	12	323
Guest rooms	9 492	5 669	3 882	2 816	777	7 467	5 624	2 359	19 043
Bed spaces	24 114	15 441	12 901	7 077	1 985	20 656	16 320	6 418	52 456
Persons employed	6 581	1 761	1 300	1 381	375	2 840	2 840	2 206	9 642
<b>ROOM NIGHTS OCCUPIED ('000)</b>									
<b>2000</b>									
<i>September quarter</i>	498.5	261.7	185.3	106.4	41.9	342.9	303.7	150.7	945.5
<b>2001</b>									
July	158.0	79.3	64.0	33.8	11.6	112.9	101.5	41.6	301.3
August	182.4	83.0	61.7	35.0	11.1	118.2	111.5	51.2	327.1
September	171.2	92.2	64.4	36.6	11.7	128.2	109.6	41.8	327.9
<i>September quarter</i>	511.7	254.5	190.2	105.4	34.4	359.3	322.6	134.6	956.3
<b>ROOM OCCUPANCY RATES (%)</b>									
<b>2000</b>									
<i>September quarter</i>	57.0	48.8	54.2	39.2	49.5	50.2	61.5	68.4	53.9
<b>2001</b>									
July	53.7	45.1	53.2	38.7	48.1	48.8	58.2	56.8	51.0
August	62.0	47.2	51.3	40.1	46.2	51.1	64.0	70.1	55.4
September	60.1	54.2	55.3	43.3	50.2	57.2	64.9	59.1	57.4
<i>September quarter</i>	58.6	48.8	53.2	40.7	48.2	52.3	62.3	62.0	54.6
<b>GUEST NIGHTS ('000)</b>									
<b>2000</b>									
<i>September quarter</i>	738.9	424.7	397.9	165.9	66.0	581.2	505.1	243.3	1 561.5
<b>2001</b>									
July	236.0	131.9	142.1	53.1	19.6	193.3	175.1	68.9	510.0
August	265.9	134.1	127.7	53.0	17.0	192.8	183.1	81.8	527.7
September	256.8	152.7	134.9	56.4	18.5	213.9	187.3	68.3	544.4
<i>September quarter</i>	758.7	418.8	404.6	162.5	55.1	600.0	545.5	219.0	1 582.1
<b>BED OCCUPANCY RATES (%)</b>									
<b>2000</b>									
<i>September quarter</i>	33.5	29.3	34.1	23.8	31.1	30.9	35.2	40.6	32.4
<b>2001</b>									
July	31.6	27.6	35.5	24.2	31.8	30.2	34.6	34.6	31.4
August	35.6	28.0	31.9	24.1	27.7	30.1	36.2	41.1	32.5
September	35.5	33.0	34.8	26.6	31.1	34.5	38.3	35.5	34.6
<i>September quarter</i>	34.2	29.5	34.1	25.0	30.2	31.6	36.3	37.1	32.8

(a) Comprising establishments with 15 or more rooms or units. See Explanatory Notes, paragraph 7.

# 7 HOTELS, MOTELS, GUEST HOUSES AND SERVICED APARTMENTS (a)—WA *continued*

## STAR GRADING .....

Period	Licensed hotels with facilities	Motels and guest houses	Serviced apartments	1 and Ungraded	2	3	4	5	Total
GUEST ARRIVALS ('000)									
<b>2000</b>									
September quarter	344.7	214.9	123.0	80.5	33.2	277.1	205.4	86.4	682.6
<b>2001</b>									
July	110.3	62.4	42.1	21.7	9.4	86.2	71.1	26.4	214.9
August	122.5	63.9	37.8	21.7	8.5	89.4	75.1	29.6	224.3
September	123.8	74.9	41.1	25.2	10.1	99.9	78.5	26.1	239.8
September quarter	356.7	201.2	121.1	68.6	28.0	275.5	224.7	82.2	679.0
AVERAGE LENGTH OF STAY (days)									
<b>2000</b>									
September quarter	2.1	2.0	3.2	2.1	2.0	2.1	2.5	2.8	2.3
<b>2001</b>									
September quarter	2.1	2.1	3.3	2.4	2.0	2.2	2.4	2.7	2.3
TAKINGS FROM ACCOMMODATION (\$'000)									
<b>2000</b>									
September quarter	54 947	22 534	18 741	6 798	3 092	27 551	35 385	23 397	96 222
<b>2001</b>									
July	17 163	6 347	6 666	2 333	899	9 460	11 944	5 540	30 176
August	19 760	6 531	6 411	2 442	824	9 767	12 852	6 817	32 702
September	18 179	7 306	6 608	2 425	840	10 632	12 492	5 704	32 092
September quarter	55 101	20 184	19 685	7 200	2 562	29 859	37 289	18 061	94 970
AVERAGE TAKINGS PER ROOM NIGHT OCCUPIED (\$)									
<b>2000</b>									
September quarter	110.2	86.1	101.1	63.9	73.8	80.4	116.5	155.3	101.8
<b>2001</b>									
July	108.6	80.0	104.2	69.0	77.6	83.8	117.7	133.3	100.1
August	108.3	78.7	103.9	69.8	74.0	82.6	115.2	133.1	100.0
September	106.2	79.2	102.5	66.3	71.7	82.9	114.0	136.3	97.9
September quarter	107.7	79.3	103.5	68.3	74.4	83.1	115.6	134.1	99.3
AVERAGE TAKINGS PER AVAILABLE ROOM NIGHT (\$)									
<b>2000</b>									
September quarter	62.8	42.1	54.8	25.0	36.6	40.3	71.7	106.2	54.9
<b>2001</b>									
July	58.3	36.1	55.4	26.7	37.3	40.9	68.5	75.8	51.1
August	67.2	37.2	53.3	28.0	34.2	42.2	73.7	93.2	55.4
September	63.8	43.0	56.7	28.7	36.0	47.5	74.0	80.6	56.2
September quarter	63.1	38.7	55.1	27.8	35.8	43.5	72.1	83.2	54.2

(a) Comprising establishments with 15 or more rooms or units. See Explanatory Notes, paragraph 7.

## STAR GRADING .....

Period	Licensed hotels with facilities	Motels and guest houses	Serviced apartments	1 and ungraded	2	3	4 and 5	Total
ESTABLISHMENTS, CAPACITY AND EMPLOYMENT (number)								
<b>September quarter 2000</b>								
Establishments	54	51	25	9	16	73	32	130
Guest rooms	2 909	1 749	876	291	439	2 738	2 066	5 534
Bed spaces	8 023	5 441	3 330	838	1 126	8 494	6 336	16 794
Persons employed	2 842	665	427	143	233	1 245	2 313	3 934
<b>September quarter 2001</b>								
Establishments	52	50	25	9	15	71	32	127
Guest rooms	2 847	1 671	910	211	467	2 626	2 124	5 428
Bed spaces	7 796	5 156	3 214	682	1 168	8 038	6 278	16 166
Persons employed	2 627	647	422	189	168	1 192	2 147	3 696
ROOM NIGHTS OCCUPIED ('000)								
<b>2000</b>								
September quarter	102.5	52.6	35.9	5.8	9.3	78.3	97.5	191.0
<b>2001</b>								
July	30.7	16.6	11.3	1.8	2.3	23.6	30.9	58.6
August	32.1	17.7	11.6	2.0	2.9	23.3	33.1	61.4
September	35.0	20.9	15.1	2.5	4.0	28.8	35.7	70.9
September quarter	97.8	55.2	37.9	6.3	9.3	75.7	99.7	190.9
ROOM OCCUPANCY RATES (%)								
<b>2000</b>								
September quarter	38.3	33.4	44.6	21.8	23.1	31.5	51.3	37.8
<b>2001</b>								
July	34.8	32.1	39.9	27.8	16.1	29.0	46.9	34.8
August	36.4	34.1	41.0	30.9	20.2	28.7	50.3	36.5
September	41.0	41.9	55.2	38.7	29.6	36.5	56.0	43.7
September quarter	37.4	36.0	45.3	32.4	21.8	31.3	51.0	38.3
GUEST NIGHTS ('000)								
<b>2000</b>								
September quarter	161.4	99.8	75.8	13.2	12.1	155.2	156.5	337.0
<b>2001</b>								
July	47.1	30.0	22.7	4.3	3.6	44.0	47.9	99.8
August	48.1	31.4	22.6	4.4	4.0	43.1	50.6	102.1
September	56.4	39.1	31.2	6.5	5.3	56.8	58.0	126.6
September quarter	151.5	100.5	76.5	15.3	12.8	143.9	156.5	328.5
BED OCCUPANCY RATES (%)								
<b>2000</b>								
September quarter	21.9	20.3	24.7	17.2	11.7	20.1	26.8	22.0
<b>2001</b>								
July	19.5	18.7	22.8	20.6	9.8	17.6	24.6	19.9
August	19.9	19.7	22.7	20.9	11.0	17.3	26.0	20.4
September	24.1	25.5	32.3	31.7	15.5	23.6	30.8	26.2
September quarter	21.1	21.2	25.9	24.3	12.0	19.5	27.1	22.1

(a) Comprising establishments with 15 or more rooms or units. See Explanatory Notes, paragraph 7.

## STAR GRADING .....

Period	Licensed hotels with facilities	Motels and guest houses	Serviced apartments	1 and ungraded	2	3	4 and 5	Total
GUEST ARRIVALS ('000)								
<b>2000</b>								
September quarter	86.1	56.0	31.8	6.3	6.3	86.5	74.8	173.9
<b>2001</b>								
July	25.2	16.7	8.9	1.7	2.2	23.7	23.2	50.8
August	26.7	17.0	8.7	1.8	2.3	24.1	24.3	52.5
September	30.1	19.8	10.6	2.5	2.5	30.2	25.2	60.5
September quarter	82.1	53.4	28.2	5.9	7.1	78.0	72.7	163.7
AVERAGE LENGTH OF STAY (days)								
<b>2000</b>								
September quarter	1.9	1.8	2.4	2.1	1.9	1.8	2.1	1.9
<b>2001</b>								
September quarter	1.8	1.9	2.7	2.6	1.8	1.8	2.2	2.0
TAKINGS FROM ACCOMMODATION (\$'000)								
<b>2000</b>								
September quarter	9 739	4 425	3 888	477	397	5 814	11 364	18 052
<b>2001</b>								
July	2 850	1 412	1 205	146	129	1 820	3 373	5 467
August	2 959	1 430	1 238	159	162	1 755	3 551	5 627
September	3 361	1 753	1 717	239	199	2 261	4 132	6 831
September quarter	9 170	4 595	4 161	544	490	5 836	11 056	17 926
AVERAGE TAKINGS PER ROOM NIGHT OCCUPIED (\$)								
<b>2000</b>								
September quarter	95.0	84.1	108.3	81.7	42.6	74.2	116.5	94.5
<b>2001</b>								
July	92.8	84.8	107.1	80.4	55.3	77.2	109.2	93.3
August	92.1	80.9	107.0	78.5	55.5	75.2	107.3	91.7
September	96.1	84.0	113.9	97.5	49.2	78.6	115.8	96.3
September quarter	93.7	83.2	109.8	86.4	52.7	77.1	110.9	93.9
AVERAGE TAKINGS PER AVAILABLE ROOM NIGHT (\$)								
<b>2000</b>								
September quarter	36.4	28.1	48.2	17.8	9.8	23.4	59.8	35.7
<b>2001</b>								
July	32.3	27.3	42.7	22.3	8.9	22.4	51.2	32.5
August	33.5	27.6	43.9	24.3	11.2	21.6	53.9	33.4
September	39.4	35.2	62.9	37.7	14.6	28.7	64.9	42.0
September quarter	35.0	30.0	49.7	28.0	11.5	24.2	56.6	35.9

(a) Comprising establishments with 15 or more rooms or units. See Explanatory Notes, paragraph 7.

## STAR GRADING .....

<i>Period</i>	<i>Licensed hotels with facilities</i>	<i>Motels and guest houses</i>	<i>Serviced apartments</i>	<i>1 and Ungraded</i>	<i>2</i>	<i>3</i>	<i>4 and 5</i>	<i>Total</i>
ESTABLISHMENTS, CAPACITY AND EMPLOYMENT (number)								
<b>September quarter 2000</b>								
Establishments	23	50	18	22	19	34	16	91
Guest rooms	1 937	3 153	1 168	675	780	2 531	2 272	6 258
Bed spaces	5 554	9 373	3 850	1 943	2 360	7 599	6 875	18 777
Persons employed	1 717	1 174	404	273	243	1 062	1 717	3 295
<b>September quarter 2001</b>								
Establishments	23	49	17	21	19	33	16	89
Guest rooms	1 943	3 164	1 151	711	773	2 489	2 285	6 258
Bed spaces	5 162	9 545	3 788	1 975	2 369	7 770	6 381	18 495
Persons employed	1 741	1 146	377	281	278	1 025	1 680	3 264
ROOM NIGHTS OCCUPIED ('000)								
<b>2000</b>								
<i>September quarter</i>	121.7	192.5	85.1	38.2	42.2	155.0	163.9	399.3
<b>2001</b>								
July	48.3	73.2	30.1	13.9	17.2	59.3	61.2	151.6
August	46.3	71.3	29.6	14.8	15.8	57.0	59.6	147.2
September	40.1	59.8	23.6	11.0	13.1	48.1	51.3	123.5
<i>September quarter</i>	134.7	204.2	83.3	39.8	46.1	164.3	172.1	422.3
ROOM OCCUPANCY RATES (%)								
<b>2000</b>								
<i>September quarter</i>	68.3	66.4	79.2	61.5	58.8	66.6	78.4	69.4
<b>2001</b>								
July	80.1	74.6	84.5	63.1	71.6	76.8	86.4	78.1
August	76.9	72.6	82.9	67.2	66.0	73.8	84.1	75.9
September	68.8	63.0	68.4	51.7	56.4	64.4	74.9	65.8
<i>September quarter</i>	75.4	70.2	78.7	60.8	64.8	71.8	81.9	73.3
GUEST NIGHTS ('000)								
<b>2000</b>								
<i>September quarter</i>	212.2	340.8	175.9	72.9	76.0	312.0	268.1	729.0
<b>2001</b>								
July	84.6	130.6	62.8	24.4	32.1	117.4	104.2	278.0
August	80.7	124.0	58.8	26.2	27.3	108.7	101.3	263.5
September	67.1	102.5	45.9	18.3	22.6	91.1	83.5	215.4
<i>September quarter</i>	232.5	357.1	167.4	68.9	82.0	317.2	289.0	757.0
BED OCCUPANCY RATES (%)								
<b>2000</b>								
<i>September quarter</i>	41.5	39.5	49.7	40.8	35.0	44.6	42.4	42.2
<b>2001</b>								
July	52.9	44.2	53.4	39.8	43.7	48.7	52.7	48.5
August	50.4	41.9	50.1	42.8	37.2	45.1	51.2	46.0
September	43.3	35.8	40.4	30.9	31.7	39.1	43.6	38.8
<i>September quarter</i>	49.0	40.7	48.0	37.9	37.6	44.4	49.2	44.5

(a) Comprising establishments with 15 or more rooms or units. See Explanatory Notes, paragraph 7.

## STAR GRADING .....

Period	Licensed hotels with facilities	Motels and guest houses	Serviced apartments	1 and Ungraded	2	3	4 and 5	Total
GUEST ARRIVALS ('000)								
<b>2000</b>								
September quarter	117.3	172.6	56.3	32.1	46.4	151.0	116.6	346.1
<b>2001</b>								
July	46.1	75.1	21.3	10.7	20.9	62.1	48.8	142.5
August	45.5	73.5	18.8	11.0	17.7	60.6	48.6	137.8
September	37.6	58.0	15.9	9.2	14.5	47.8	40.1	111.5
September quarter	129.2	206.7	56.0	30.8	53.1	170.4	137.5	391.9
AVERAGE LENGTH OF STAY (days)								
<b>2000</b>								
September quarter	1.8	2.0	3.1	2.3	1.6	2.1	2.3	2.1
<b>2001</b>								
September quarter	1.8	1.7	3.0	2.2	1.5	1.9	2.1	1.9
TAKINGS FROM ACCOMMODATION (\$'000)								
<b>2000</b>								
September quarter	17 605	19 983	10 590	3 309	3 310	19 311	22 248	48 178
<b>2001</b>								
July	7 006	7 805	3 687	1 189	1 369	7 599	8 340	18 497
August	7 145	7 782	3 663	1 212	1 286	7 519	8 573	18 591
September	5 732	6 212	2 758	905	1 021	5 949	6 826	14 702
September quarter	19 883	21 799	10 108	3 307	3 676	21 068	23 739	51 790
AVERAGE TAKINGS PER ROOM NIGHT OCCUPIED (\$)								
<b>2000</b>								
September quarter	144.6	103.8	124.4	86.6	78.4	124.6	135.7	120.6
<b>2001</b>								
July	145.1	106.7	122.3	85.4	79.8	128.2	136.2	122.0
August	154.2	109.2	123.8	81.8	81.4	132.0	143.9	126.3
September	142.9	103.9	116.8	82.2	78.1	123.8	133.0	119.0
September quarter	147.6	106.7	121.3	83.2	79.8	128.2	137.9	122.6
AVERAGE TAKINGS PER AVAILABLE ROOM NIGHT (\$)								
<b>2000</b>								
September quarter	98.8	68.9	98.6	53.3	46.1	82.9	106.4	83.7
<b>2001</b>								
July	116.3	79.6	103.3	53.9	57.1	98.5	117.7	95.3
August	118.6	79.3	102.7	55.0	53.7	97.5	121.0	95.8
September	98.3	65.4	79.9	42.5	44.0	79.7	99.6	78.3
September quarter	111.2	74.9	95.5	50.5	51.7	92.0	112.9	90.0

(a) Comprising establishments with 15 or more rooms or units. See Explanatory Notes, paragraph 7.

## STAR GRADING .....

<i>Period</i>	<i>Licensed hotels with facilities</i>	<i>Motels and guest houses</i>	<i>Serviced apartments</i>	<i>1 and ungraded</i>	<i>2</i>	<i>3</i>	<i>4 and 5</i>	<i>Total</i>
ESTABLISHMENTS, CAPACITY AND EMPLOYMENT (number)								
<b>September quarter 2000</b>								
Establishments	15	25	20	10	8	20	22	60
Guest rooms	1 901	1 677	1 445	519	561	1 396	2 547	5 023
Bed spaces	5 087	5 207	4 884	1 592	1 742	4 346	7 498	15 178
Persons employed	1 544	560	433	128	152	497	1 760	2 537
<b>September quarter 2001</b>								
Establishments	15	25	20	8	7	21	24	60
Guest rooms	1 906	1 685	1 522	367	479	1 485	2 782	5 113
Bed spaces	4 834	5 171	5 083	1 165	1 557	4 583	7 783	15 088
Persons employed	1 231	581	428	97	92	533	1 518	2 240
ROOM NIGHTS OCCUPIED ('000)								
<b>2000</b>								
<i>September quarter</i>	101.6	77.8	83.1	25.0	25.9	64.2	147.3	262.4
<b>2001</b>								
July	35.5	28.6	32.2	6.3	8.2	24.6	57.2	96.3
August	38.6	27.4	28.5	6.3	6.4	25.2	56.5	94.5
September	39.0	33.2	30.5	6.8	8.8	27.6	59.5	102.7
<i>September quarter</i>	113.2	89.2	91.1	19.4	23.4	77.4	173.2	293.4
ROOM OCCUPANCY RATES (%)								
<b>2000</b>								
<i>September quarter</i>	58.1	50.4	62.5	52.4	50.2	50.0	62.9	56.8
<b>2001</b>								
July	60.1	54.7	68.2	55.0	55.4	53.5	66.3	60.7
August	65.4	52.5	60.3	55.8	42.8	54.8	65.6	59.6
September	68.2	65.7	66.7	62.0	61.5	61.8	71.3	66.9
<i>September quarter</i>	64.5	57.5	65.1	57.5	53.1	56.7	67.7	62.4
GUEST NIGHTS ('000)								
<b>2000</b>								
<i>September quarter</i>	150.0	140.2	153.3	44.0	51.0	124.5	223.9	443.5
<b>2001</b>								
July	57.9	54.9	62.3	13.6	19.3	47.6	94.5	175.1
August	55.5	49.5	51.2	12.9	13.3	45.9	84.0	156.2
September	60.0	63.6	58.4	14.8	20.4	53.1	93.7	182.0
<i>September quarter</i>	173.3	167.9	172.0	41.3	53.1	146.6	272.3	513.2
BED OCCUPANCY RATES (%)								
<b>2000</b>								
<i>September quarter</i>	32.0	29.3	34.1	30.1	31.8	31.1	32.5	31.8
<b>2001</b>								
July	38.6	34.2	39.5	37.8	40.1	33.5	39.2	37.4
August	37.0	30.9	32.5	35.7	27.6	32.3	34.8	33.4
September	41.3	41.0	38.3	42.3	43.6	38.6	40.1	40.2
<i>September quarter</i>	39.0	35.3	36.8	38.6	37.0	34.8	38.0	37.0

(a) Comprising establishments with 15 or more rooms or units. See Explanatory Notes, paragraph 7.

## STAR GRADING .....

<i>Period</i>	<i>Licensed hotels with facilities</i>	<i>Motels and guest houses</i>	<i>Serviced apartments</i>	<i>1 and ungraded</i>	<i>2</i>	<i>3</i>	<i>4 and 5</i>	<i>Total</i>
GUEST ARRIVALS ('000)								
<b>2000</b>								
<i>September quarter</i>	82.0	81.7	38.2	14.9	20.2	52.1	114.7	201.8
<b>2001</b>								
<i>July</i>	33.9	29.0	15.2	4.4	5.8	20.5	47.4	78.1
<i>August</i>	32.1	28.3	14.3	4.5	4.6	20.4	45.2	74.7
<i>September</i>	27.8	35.3	16.9	5.0	7.5	22.8	44.7	79.9
<i>September quarter</i>	93.7	92.6	46.4	13.8	17.9	63.6	137.3	232.7
AVERAGE LENGTH OF STAY (days)								
<b>2000</b>								
<i>September quarter</i>	1.8	1.7	4.0	3.0	2.5	2.4	2.0	2.2
<b>2001</b>								
<i>September quarter</i>	1.8	1.8	3.7	3.0	3.0	2.3	2.0	2.2
TAKINGS FROM ACCOMMODATION (\$'000)								
<b>2000</b>								
<i>September quarter</i>	14 109	6 489	9 281	2 306	1 661	5 576	20 335	29 878
<b>2001</b>								
<i>July</i>	4 287	2 394	3 523	532	529	1 895	7 247	10 203
<i>August</i>	5 196	2 277	2 944	508	414	2 066	7 429	10 417
<i>September</i>	5 217	2 798	3 410	560	624	2 448	7 794	11 425
<i>September quarter</i>	14 700	7 469	9 877	1 600	1 567	6 409	22 470	32 045
AVERAGE TAKINGS PER ROOM NIGHT OCCUPIED (\$)								
<b>2000</b>								
<i>September quarter</i>	138.9	83.4	111.7	92.1	64.1	86.9	138.0	113.8
<b>2001</b>								
<i>July</i>	120.6	83.8	109.5	85.0	64.4	77.0	126.7	106.0
<i>August</i>	134.6	83.1	103.5	80.1	65.1	81.9	131.4	110.3
<i>September</i>	133.7	84.3	111.9	82.1	70.6	88.8	131.1	111.3
<i>September quarter</i>	129.9	83.8	108.4	82.4	66.9	82.8	129.7	109.2
AVERAGE TAKINGS PER AVAILABLE ROOM NIGHT (\$)								
<b>2000</b>								
<i>September quarter</i>	80.7	42.1	69.8	48.3	32.2	43.4	86.8	64.7
<b>2001</b>								
<i>July</i>	72.5	45.8	74.7	46.7	35.6	41.2	84.0	64.4
<i>August</i>	87.9	43.6	62.4	44.7	27.9	44.9	86.1	65.7
<i>September</i>	91.2	55.4	74.7	50.8	43.4	54.9	93.4	74.5
<i>September quarter</i>	83.8	48.2	70.5	47.4	35.6	46.9	87.8	68.1

(a) Comprising establishments with 15 or more rooms or units. See Explanatory Notes, paragraph 7.



Period	South Coast	Illawarra	Sydney	Snowy Mountains	Capital Country	The Murray	Riverina	Explorer Country
ESTABLISHMENTS, CAPACITY AND EMPLOYMENT (number)								
<b>September quarter 2000</b>								
Establishments	80	32	295	60	68	98	68	122
Guest rooms	1 946	1 106	33 171	2 391	2 139	2 840	1 937	3 528
Bed spaces	6 030	3 389	84 236	9 423	6 307	9 114	5 722	10 949
Persons employed	607	619	23 939	908	897	928	659	1 262
<b>September quarter 2001</b>								
Establishments	81	33	296	58	68	99	68	120
Guest rooms	1 992	1 126	33 483	2 344	2 132	2 867	1 913	3 464
Bed spaces	6 098	3 516	83 068	9 362	6 209	8 863	5 636	10 561
Persons employed	617	628	21 590	808	866	921	640	1 206
ROOM NIGHTS OCCUPIED ('000)								
<b>2000</b>								
September quarter	65.1	58.4	2 093.6	132.3	97.2	112.1	93.3	170.5
<b>2001</b>								
July	22.8	17.6	686.3	45.6	34.1	35.5	31.9	58.2
August	20.8	15.4	651.8	47.7	30.9	35.7	30.8	53.7
September	24.6	16.8	632.0	27.3	35.7	42.8	34.1	61.8
September quarter	68.2	49.8	1 970.1	120.6	100.7	114.0	96.8	173.8
ROOM OCCUPANCY RATES (%)								
<b>2000</b>								
September quarter	36.3	57.4	69.6	60.1	49.4	42.9	52.3	52.5
<b>2001</b>								
July	36.9	50.3	66.1	62.8	51.7	39.9	53.8	54.2
August	33.6	44.1	62.8	65.9	46.7	40.2	51.9	50.0
September	41.2	49.8	62.9	39.3	55.8	49.8	59.3	59.5
September quarter	37.2	48.1	64.0	56.3	51.4	43.2	55.0	54.5
GUEST NIGHTS ('000)								
<b>2000</b>								
September quarter	117.8	96.7	3 255.4	379.2	178.9	206.6	152.3	319.5
<b>2001</b>								
July	41.8	29.9	1 163.1	136.6	64.1	66.7	50.7	107.9
August	35.4	24.3	1 067.7	140.8	55.7	63.1	47.5	88.3
September	45.3	29.2	1 047.1	68.3	66.6	78.8	55.9	114.4
September quarter	122.5	83.4	3 278.0	345.7	186.3	208.7	154.1	310.5
GUEST ARRIVALS ('000)								
<b>2000</b>								
September quarter	75.2	49.2	1 103.2	129.6	117.2	129.6	108.9	230.9
<b>2001</b>								
July	25.5	14.8	437.3	43.1	40.8	40.4	36.4	78.4
August	21.8	12.2	426.3	48.3	36.7	39.7	33.4	64.0
September	27.1	14.7	405.9	23.5	41.9	45.9	39.1	81.8
September quarter	74.4	41.7	1 269.5	114.9	119.3	126.0	108.8	224.1
TAKINGS FROM ACCOMMODATION (\$'000)								
<b>2000</b>								
September quarter	4 796	6 455	422 222	25 110	9 589	8 292	6 980	12 821
<b>2001</b>								
July	1 661	1 815	99 441	9 347	3 117	2 707	2 471	4 446
August	1 528	1 537	93 171	10 282	2 707	2 701	2 347	3 933
September	1 877	1 821	94 122	4 353	3 211	3 310	2 674	4 687
September quarter	5 066	5 173	286 734	23 982	9 035	8 718	7 492	13 066

<i>Period</i>	<i>Hunter</i>	<i>North Coast NSW</i>	<i>Northern Rivers Tropical NSW</i>	<i>Big Sky Country</i>	<i>The Living Outback</i>	<i>Central Coast</i>	<i>Blue Mountains</i>
ESTABLISHMENTS, CAPACITY AND EMPLOYMENT (number)							
<b>September quarter 2000</b>							
Establishments	99	127	77	89	38	39	34
Guest rooms	3 784	3 888	2 166	2 479	948	1 371	1 306
Bed spaces	12 064	12 628	6 803	7 457	2 717	4 611	3 594
Persons employed	2 147	1 691	668	838	296	899	1 114
<b>September quarter 2001</b>							
Establishments	100	124	76	90	38	40	33
Guest rooms	3 856	3 866	2 126	2 507	945	1 531	1 263
Bed spaces	12 028	12 384	6 625	7 513	2 807	4 991	3 560
Persons employed	2 128	1 660	632	873	287	836	976
ROOM NIGHTS OCCUPIED ('000)							
<b>2000</b>							
<i>September quarter</i>	171.9	169.0	96.1	116.4	44.9	58.4	64.2
<b>2001</b>							
July	55.6	60.4	33.2	38.5	13.9	19.1	22.8
August	55.2	54.3	31.6	37.0	15.0	19.3	18.6
September	63.9	64.8	34.3	42.2	16.0	20.8	18.9
<i>September quarter</i>	174.8	179.5	99.1	117.7	44.8	59.2	60.3
ROOM OCCUPANCY RATES (%)							
<b>2000</b>							
<i>September quarter</i>	49.4	47.6	48.6	51.2	51.7	46.3	53.5
<b>2001</b>							
July	46.5	50.4	50.4	49.5	47.4	40.2	58.2
August	46.2	45.3	48.0	47.6	51.0	40.8	47.5
September	55.3	55.9	53.7	56.1	56.3	45.3	49.8
<i>September quarter</i>	49.3	50.5	50.7	51.0	51.5	42.1	51.9
GUEST NIGHTS ('000)							
<b>2000</b>							
<i>September quarter</i>	309.6	334.3	179.8	201.2	77.7	103.4	120.8
<b>2001</b>							
July	104.2	122.1	62.7	66.4	23.6	37.7	44.5
August	97.3	98.1	57.1	59.8	24.5	36.7	32.7
September	116.4	128.8	66.0	76.7	27.4	41.2	34.3
<i>September quarter</i>	317.9	348.9	185.8	202.9	75.4	115.6	111.5
GUEST ARRIVALS ('000)							
<b>2000</b>							
<i>September quarter</i>	173.1	203.8	113.0	147.1	50.9	53.5	62.8
<b>2001</b>							
July	59.4	69.8	36.7	47.1	15.5	18.9	26.3
August	56.1	59.0	33.3	41.8	15.8	18.8	20.8
September	65.9	74.0	37.9	51.9	17.2	21.1	21.7
<i>September quarter</i>	181.4	202.7	107.8	140.8	48.5	58.8	68.9
TAKINGS FROM ACCOMMODATION (\$'000)							
<b>2000</b>							
<i>September quarter</i>	19 709	13 726	7 211	8 439	2 954	8 069	9 944
<b>2001</b>							
July	6 293	5 009	2 591	2 818	919	2 201	3 314
August	6 156	4 317	2 429	2 829	984	2 157	2 633
September	7 137	5 519	2 726	3 244	1 108	2 382	2 621
<i>September quarter</i>	19 586	14 846	7 746	8 891	3 011	6 740	8 568

Period	Melbourne	Wimmera	Mallee	Western	Western Grampians	Bendigo Loddon	Peninsula	Central Murray	Goulburn	High Country
<b>ESTABLISHMENTS, CAPACITY AND EMPLOYMENT (number)</b>										
<b>September quarter 2000</b>										
Establishments	228	6	42	54	20	31	21	21	27	72
Guest rooms	17 847	117	1 263	1 428	482	784	723	560	694	1 927
Bed spaces	45 106	334	3 807	4 351	1 387	2 384	1 879	1 690	2 034	7 075
Persons employed	15 617	32	491	739	207	357	373	154	373	880
<b>September quarter 2001</b>										
Establishments	235	6	41	55	20	31	21	21	27	73
Guest rooms	18 887	117	1 225	1 452	489	782	725	560	700	2 012
Bed spaces	47 117	328	3 681	4 413	1 407	2 384	1 940	1 635	2 018	7 030
Persons employed	15 951	31	482	740	214	349	369	151	369	902
<b>ROOM NIGHTS OCCUPIED ('000)</b>										
<b>2000</b>										
September quarter	1 113.7	4.2	54.3	50.4	19.8	34.9	21.8	18.6	31.3	81.3
<b>2001</b>										
July	400.3	1.3	16.5	19.9	6.4	13.7	7.5	6.9	10.5	27.7
August	391.9	1.2	16.1	18.5	6.7	11.7	7.3	5.9	9.8	29.2
September	358.2	1.6	18.9	20.7	6.6	12.3	7.7	7.2	10.5	19.2
September quarter	1 150.4	4.1	51.6	59.1	19.7	37.7	22.5	20.0	30.8	76.1
<b>ROOM OCCUPANCY RATES (%)</b>										
<b>2000</b>										
September quarter	67.8	38.8	46.7	38.9	44.7	48.4	32.8	36.1	49.1	46.2
<b>2001</b>										
July	68.4	35.6	43.5	44.3	42.3	56.5	33.2	39.8	48.2	44.5
August	66.9	32.9	42.5	41.2	44.5	48.4	32.6	34.2	45.1	46.8
September	63.2	45.0	51.4	47.4	44.7	52.5	35.4	42.7	50.0	31.9
September quarter	66.2	37.8	45.7	44.2	43.8	52.5	33.7	38.9	47.8	41.1
<b>GUEST NIGHTS ('000)</b>										
<b>2000</b>										
September quarter	1 740.5	6.6	92.3	95.6	32.2	60.1	32.6	34.1	50.1	212.1
<b>2001</b>										
July	665.7	2.0	28.2	38.4	10.1	24.9	12.8	12.5	16.6	75.0
August	623.9	1.9	25.4	33.5	10.1	18.3	11.8	9.8	14.7	78.3
September	577.9	2.4	32.6	38.3	10.5	20.7	13.9	12.5	16.4	47.7
September quarter	1 867.6	6.3	86.2	110.2	30.7	64.0	38.5	34.8	47.8	201.0
<b>GUEST ARRIVALS ('000)</b>										
<b>2000</b>										
September quarter	737.1	5.1	56.4	68.1	25.3	40.6	20.4	24.1	32.5	91.8
<b>2001</b>										
July	279.6	1.4	18.3	25.3	7.8	15.7	7.4	8.5	11.5	31.2
August	280.6	1.4	16.2	21.7	7.5	12.5	7.2	6.6	10.2	33.3
September	252.5	1.6	19.6	24.8	8.2	14.4	7.8	8.0	11.4	23.2
September quarter	812.7	4.4	54.0	71.8	23.4	42.6	22.4	23.1	33.1	87.7
<b>TAKINGS FROM ACCOMMODATION (\$'000)</b>										
<b>2000</b>										
September quarter	158 765	231	3 856	4 417	1 528	2 857	2 476	1 520	2 304	13 604
<b>2001</b>										
July	57 785	74	1 243	1 808	532	1 205	894	527	773	4 798
August	55 662	71	1 167	1 643	572	982	896	428	761	5 183
September	51 148	93	1 402	1 871	537	1 017	930	538	813	2 530
September quarter	164 595	239	3 812	5 321	1 641	3 204	2 720	1 492	2 347	12 511

Period	Lakes	Gippsland	Melbourne East	Geelong	Macedon	Spa Country	Ballarat	Central Highlands	Upper Yarra	Murray East	Phillip Island
ESTABLISHMENTS, CAPACITY AND EMPLOYMENT (number)											
<b>September quarter 2000</b>											
Establishments	25	34	14	22	4	5	26	14	13	14	10
Guest rooms	670	1 021	448	691	115	118	875	337	422	319	317
Bed spaces	2 010	3 061	1 039	2 114	243	300	2 688	1 041	1 086	977	1 113
Persons employed	251	298	441	358	95	105	456	88	285	70	114
<b>September quarter 2001</b>											
Establishments	24	34	12	22	3	5	26	14	13	13	11
Guest rooms	666	999	360	785	72	117	879	343	425	306	373
Bed spaces	1 951	2 864	873	2 133	163	286	2 742	1 081	1 095	928	1 329
Persons employed	225	302	346	374	63	111	478	89	252	69	144
ROOM NIGHTS OCCUPIED ('000)											
<b>2000</b>											
September quarter	17.9	30.3	15.0	30.4	3.6	4.6	35.2	11.1	10.7	10.9	8.7
<b>2001</b>											
July	5.9	10.7	4.4	10.3	0.7	2.1	11.0	3.6	4.3	3.4	3.0
August	5.1	10.5	3.9	11.1	0.8	2.3	11.3	3.7	3.4	3.5	2.4
September	5.8	10.0	3.5	10.5	0.6	2.0	12.9	3.9	3.3	3.6	3.8
September quarter	16.8	31.2	11.7	31.9	2.1	6.3	35.2	11.2	11.1	10.5	9.2
ROOM OCCUPANCY RATES (%)											
<b>2000</b>											
September quarter	29.1	32.2	36.4	47.8	34.0	42.3	44.2	35.8	27.5	37.2	29.7
<b>2001</b>											
July	28.5	34.4	39.3	42.4	31.8	57.8	40.5	33.7	32.9	35.4	26.3
August	24.7	34.0	34.5	45.5	37.7	62.6	41.6	34.6	26.0	36.8	20.8
September	29.2	33.5	32.3	44.6	26.5	55.8	48.7	37.9	26.3	39.6	33.7
September quarter	27.4	34.0	35.4	44.1	32.0	58.7	43.5	35.4	28.4	37.2	26.9
GUEST NIGHTS ('000)											
<b>2000</b>											
September quarter	32.2	42.6	21.7	48.6	4.3	7.3	73.4	20.9	17.6	18.5	20.6
<b>2001</b>											
July	10.5	16.6	6.4	16.7	0.9	3.5	23.6	6.9	7.0	5.9	7.6
August	8.4	15.0	5.6	17.2	0.9	3.3	22.0	6.7	5.0	5.7	6.1
September	10.8	14.7	5.3	16.6	0.7	3.0	27.2	7.8	5.4	6.4	11.0
September quarter	29.6	46.3	17.3	50.5	2.5	9.8	72.7	21.4	17.3	18.0	24.7
GUEST ARRIVALS ('000)											
<b>2000</b>											
September quarter	22.8	26.8	12.8	28.0	2.6	5.3	44.0	14.4	10.7	11.8	11.5
<b>2001</b>											
July	7.5	9.9	4.4	9.3	0.6	2.3	14.6	4.1	3.8	4.4	4.5
August	6.0	9.7	3.9	9.4	0.6	2.2	12.8	3.7	3.2	3.9	3.9
September	7.7	9.3	3.7	9.2	0.4	2.3	15.8	5.4	3.2	4.1	5.6
September quarter	21.2	28.9	12.0	27.9	1.6	6.8	43.2	13.2	10.2	12.5	14.0
TAKINGS FROM ACCOMMODATION (\$'000)											
<b>2000</b>											
September quarter	1 292	2 204	1 695	2 743	456	725	3 098	836	1 306	731	788
<b>2001</b>											
July	423	795	532	1 024	79	303	1 020	272	553	227	277
August	368	763	455	1 137	102	316	1 007	269	415	242	220
September	436	719	439	1 085	64	242	1 127	311	427	263	346
September quarter	1 227	2 278	1 427	3 246	245	861	3 154	852	1 395	732	843

<i>Period</i>	<i>Gold Coast</i>	<i>Brisbane</i>	<i>Sunshine Coast</i>	<i>Hervey Bay/ Maryborough</i>	<i>Darling Downs</i>	<i>Bundaberg</i>
ESTABLISHMENTS, CAPACITY AND EMPLOYMENT (number)						
<b>September quarter 2000</b>						
Establishments	154	161	97	43	64	24
Guest rooms	13 345	9 764	4 415	1 608	1 635	588
Bed spaces	44 404	27 176	15 104	5 491	5 207	1 753
Persons employed	8 258	7 082	2 296	706	623	180
<b>September quarter 2001</b>						
Establishments	147	160	97	42	64	25
Guest rooms	13 242	9 684	4 499	1 575	1 646	621
Bed spaces	43 547	26 754	15 397	5 429	5 225	1 887
Persons employed	8 569	6 684	2 212	756	617	189
ROOM NIGHTS OCCUPIED ('000)						
<b>2000</b>						
<i>September quarter</i>	732.4	607.8	199.9	76.2	83.0	29.1
<b>2001</b>						
July	268.2	226.7	73.9	24.5	28.1	11.5
August	263.0	223.3	70.9	24.4	27.5	10.7
September	260.8	210.1	80.3	26.1	31.3	10.7
<i>September quarter</i>	792.0	660.1	225.1	75.0	86.9	32.9
ROOM OCCUPANCY RATES (%)						
<b>2000</b>						
<i>September quarter</i>	59.7	67.7	49.2	51.5	55.2	53.8
<b>2001</b>						
July	65.3	75.5	53.0	50.1	55.0	59.6
August	64.1	74.4	50.8	50.0	54.0	55.7
September	65.7	72.3	59.5	55.2	63.4	57.7
<i>September quarter</i>	65.0	74.1	54.4	51.7	57.4	57.6
GUEST NIGHTS ('000)						
<b>2000</b>						
<i>September quarter</i>	1 727.9	978.1	514.5	142.1	146.5	50.5
<b>2001</b>						
July	637.8	370.8	184.7	45.2	51.4	19.3
August	596.6	352.8	169.6	45.3	48.0	18.9
September	619.0	336.9	209.8	49.2	57.1	18.5
<i>September quarter</i>	1 853.4	1 060.5	564.1	139.8	156.5	56.7
GUEST ARRIVALS ('000)						
<b>2000</b>						
<i>September quarter</i>	449.2	400.5	151.4	70.0	103.4	33.8
<b>2001</b>						
July	176.3	146.1	61.9	25.6	35.8	13.0
August	165.0	146.6	57.9	25.6	33.5	12.2
September	168.0	134.2	68.0	27.0	38.7	12.7
<i>September quarter</i>	509.2	426.8	187.9	78.1	108.0	37.9
TAKINGS FROM ACCOMMODATION (\$'000)						
<b>2000</b>						
<i>September quarter</i>	75 766	60 931	22 233	6 240	6 259	2 233
<b>2001</b>						
July	26 591	24 020	7 959	1 849	2 054	935
August	26 197	23 751	7 613	1 840	2 028	866
September	26 863	23 321	9 915	2 006	2 367	898
<i>September quarter</i>	79 650	71 091	25 487	5 695	6 450	2 699

<i>Period</i>	<i>Fitzroy</i>	<i>Mackay</i>	<i>Whitsundays</i>	<i>Northern</i>	<i>Tropical North Queensland</i>	<i>Outback</i>	<i>Great Barrier Reef</i>
ESTABLISHMENTS, CAPACITY AND EMPLOYMENT (number)							
<b>September quarter 2000</b>							
Establishments	84	52	19	55	152	53	18
Guest rooms	3 142	1 687	2 440	2 394	10 108	1 429	2 719
Bed spaces	10 144	4 963	8 747	6 949	30 875	4 066	9 264
Persons employed	1 604	952	1 878	1 502	5 346	522	2 460
<b>September quarter 2001</b>							
Establishments	87	51	19	54	155	51	17
Guest rooms	3 224	1 652	2 443	2 424	10 179	1 407	2 681
Bed spaces	10 041	4 908	8 711	7 129	30 524	3 998	9 249
Persons employed	1 636	911	2 077	1 364	5 235	547	2 592
ROOM NIGHTS OCCUPIED ('000)							
<b>2000</b>							
<i>September quarter</i>	161.9	94.5	126.5	144.6	645.8	80.6	147.1
<b>2001</b>							
July	59.6	31.2	36.7	53.6	235.9	26.4	42.7
August	58.7	29.6	39.1	53.7	241.8	25.6	42.7
September	59.6	29.6	38.6	45.6	194.9	23.6	44.5
<i>September quarter</i>	177.9	90.4	114.4	152.9	672.5	75.5	130.0
ROOM OCCUPANCY RATES (%)							
<b>2000</b>							
<i>September quarter</i>	56.0	60.9	58.0	65.6	69.5	61.3	60.5
<b>2001</b>							
July	59.6	60.8	48.4	71.4	74.8	60.5	51.4
August	58.8	57.8	51.6	71.5	76.6	58.7	51.4
September	61.6	59.8	52.7	62.7	63.8	55.8	55.4
<i>September quarter</i>	60.0	59.5	50.9	68.6	71.8	58.4	52.7
GUEST NIGHTS ('000)							
<b>2000</b>							
<i>September quarter</i>	278.0	151.3	294.5	235.5	1 336.1	123.9	325.7
<b>2001</b>							
July	103.3	50.7	85.7	90.2	497.8	43.3	96.4
August	96.7	47.1	86.3	88.1	499.0	40.0	94.2
September	105.5	52.2	86.6	76.1	386.1	38.1	98.7
<i>September quarter</i>	305.5	150.0	258.6	254.4	1 382.9	121.5	289.3
GUEST ARRIVALS ('000)							
<b>2000</b>							
<i>September quarter</i>	149.9	66.0	80.3	117.3	395.5	75.2	73.9
<b>2001</b>							
July	54.5	23.7	27.0	43.2	140.5	28.7	23.5
August	51.9	23.0	25.7	42.8	140.4	25.8	22.8
September	55.6	24.6	28.3	37.8	113.0	24.1	24.7
<i>September quarter</i>	161.9	71.2	81.0	123.7	394.0	78.6	71.0
TAKINGS FROM ACCOMMODATION (\$'000)							
<b>2000</b>							
<i>September quarter</i>	13 489	6 843	20 117	12 426	81 696	5 694	27 431
<b>2001</b>							
July	4 890	2 321	5 617	4 681	29 674	1 999	8 416
August	4 766	2 255	6 913	4 716	30 990	1 980	9 734
September	4 890	2 440	6 430	4 033	25 156	1 726	9 435
<i>September quarter</i>	14 546	7 016	18 961	13 430	85 821	5 705	27 586

Period	Limestone Coast	Murray-lands	Fleurieu Peninsula	Adelaide	Adelaide Hills	Barossa	Riverland	Clare Valley	Flinders Ranges	Outback SA	Eyre Peninsula	Yorke Peninsula	Kangaroo Island
<b>ESTABLISHMENTS, CAPACITY AND EMPLOYMENT (number)</b>													
<b>September quarter 2000</b>													
Establishments	32	4	16	84	4	9	14	5	19	8	24	8	6
Guest rooms	929	96	510	5 705	132	366	499	143	649	388	766	149	167
Bed spaces	2 800	301	1 625	16 056	325	1 025	1 535	445	1 951	1 080	2 202	441	473
Persons employed	417	36	283	3 476	154	271	483	85	286	207	496	59	94
<b>September quarter 2001</b>													
Establishments	32	4	16	86	4	9	14	4	19	8	24	8	6
Guest rooms	945	96	539	5 782	132	366	499	128	647	384	768	149	167
Bed spaces	2 831	303	1 729	16 160	337	1 024	1 491	399	1 953	1 064	2 179	469	458
Persons employed	445	39	281	3 544	134	268	493	77	302	191	538	70	119
<b>ROOM NIGHTS OCCUPIED ('000)</b>													
<b>2000</b>													
September quarter	35.7	3.7	13.9	316.4	6.4	14.2	20.4	6.7	37.8	17.4	34.8	4.1	4.6
<b>2001</b>													
July	11.0	1.1	4.5	109.5	2.1	4.6	7.1	2.5	10.6	6.3	11.1	1.3	1.8
August	12.0	1.3	4.0	102.4	1.6	5.0	6.8	2.2	11.0	5.2	12.0	1.4	2.4
September	13.3	1.7	5.7	106.4	2.2	5.4	8.5	2.5	12.7	4.9	13.6	1.9	2.3
September quarter	36.3	4.0	14.2	318.3	5.9	15.0	22.4	7.2	34.3	16.5	36.7	4.6	6.5
<b>ROOM OCCUPANCY RATES (%)</b>													
<b>2000</b>													
September quarter	41.8	41.5	29.7	60.5	52.6	42.2	44.4	50.8	63.3	48.6	49.3	29.7	29.9
<b>2001</b>													
July	37.6	35.6	27.0	61.1	52.2	40.6	45.8	64.2	52.8	53.0	46.5	29.1	35.4
August	40.8	42.6	23.8	57.1	39.7	44.3	43.8	54.3	54.9	43.9	50.4	29.8	45.5
September	46.9	58.0	35.1	61.3	55.0	49.2	57.0	65.6	65.6	42.8	59.2	42.9	45.9
September quarter	41.7	45.3	28.6	59.8	48.9	44.7	48.8	61.3	57.7	46.6	52.0	33.8	42.3
<b>GUEST NIGHTS ('000)</b>													
<b>2000</b>													
September quarter	55.6	6.1	31.0	505.1	12.0	24.7	33.9	12.5	65.4	29.8	50.4	6.5	8.9
<b>2001</b>													
July	17.8	1.7	9.7	179.2	4.1	8.9	11.8	4.7	19.0	10.5	15.8	2.2	3.4
August	17.2	1.9	8.1	159.3	2.8	8.3	10.6	4.0	18.5	8.6	16.6	2.0	4.2
September	21.2	2.8	11.4	174.9	4.1	10.4	14.5	4.5	22.0	8.3	21.1	3.0	4.2
September quarter	56.3	6.4	29.2	513.4	11.0	27.6	36.9	13.3	59.6	27.4	53.5	7.1	11.7
<b>GUEST ARRIVALS ('000)</b>													
<b>2000</b>													
September quarter	36.7	4.4	19.9	218.4	6.5	16.5	22.9	8.9	44.9	20.3	33.7	4.2	5.0
<b>2001</b>													
July	11.4	1.2	6.4	75.1	2.2	5.7	7.5	3.5	13.5	6.8	10.0	1.4	1.8
August	11.1	1.4	5.2	72.7	1.7	5.8	7.3	2.9	13.0	6.0	11.0	1.3	2.3
September	13.6	2.1	7.1	75.6	2.1	6.7	9.7	3.0	15.4	5.7	14.3	1.8	2.2
September quarter	36.1	4.6	18.7	223.4	6.0	18.2	24.5	9.4	41.9	18.6	35.3	4.5	6.3
<b>TAKINGS FROM ACCOMMODATION (\$'000)</b>													
<b>2000</b>													
September quarter	2 554	211	1 151	35 303	652	1 455	1 368	589	2 578	1 317	2 293	260	380
<b>2001</b>													
July	824	70	432	11 938	222	450	487	222	757	511	750	86	148
August	875	83	357	11 172	169	497	457	203	776	417	825	85	196
September	979	111	537	11 690	233	517	574	234	904	399	940	121	193
September quarter	2 678	265	1 326	34 799	625	1 464	1 518	659	2 436	1 328	2 515	292	536

Period	South East	Goldfields	Midwest	Gascoyne	Pilbara	Kimberley	Perth	Peel	South West	Great Southern	Wheatbelt
<b>ESTABLISHMENTS, CAPACITY AND EMPLOYMENT (number)</b>											
<b>September quarter 2000</b>											
Establishments	10	25	25	11	19	27	102	6	58	19	24
Guest rooms	294	1 065	881	503	1 419	1 505	9 278	288	2 419	717	683
Bed spaces	863	2 736	2 327	1 356	2 996	4 269	25 455	1 085	7 531	2 114	1 654
Persons employed	129	443	374	202	462	926	5 619	152	1 297	296	285
<b>September quarter 2001</b>											
Establishments	10	25	25	11	19	27	99	8	57	20	22
Guest rooms	298	1 076	868	504	1 451	1 334	9 306	454	2 381	763	608
Bed spaces	907	2 828	2 348	1 347	3 085	3 900	25 526	1 500	7 253	2 267	1 495
Persons employed	124	465	377	200	473	558	5 521	158	1 247	301	218
<b>ROOM NIGHTS OCCUPIED ('000)</b>											
<b>2000</b>											
September quarter	11.9	46.5	38.9	26.0	71.2	97.3	507.8	12.0	86.0	22.7	25.3
<b>2001</b>											
July	3.0	16.3	12.9	9.7	23.4	29.6	157.2	5.2	30.2	7.5	6.2
August	3.7	17.4	14.0	9.4	25.2	31.3	177.8	4.0	28.9	7.6	7.7
September	5.1	20.0	15.9	8.5	22.8	22.6	174.3	5.1	33.7	11.2	8.7
September quarter	11.9	53.7	42.8	27.6	71.4	83.5	509.3	14.3	92.8	26.3	22.7
<b>ROOM OCCUPANCY RATES (%)</b>											
<b>2000</b>											
September quarter	44.0	47.5	48.0	56.2	54.5	70.3	59.5	45.2	38.7	34.4	40.2
<b>2001</b>											
July	32.8	48.9	48.0	62.2	52.0	71.6	54.5	36.7	41.0	31.8	32.9
August	40.3	52.1	52.2	60.0	56.0	75.6	61.6	28.8	39.2	32.1	41.0
September	57.2	61.9	61.1	56.3	52.4	56.5	62.4	37.2	47.2	49.0	47.9
September quarter	43.3	54.2	53.7	59.6	53.5	68.0	59.5	34.2	42.4	37.5	40.5
<b>GUEST NIGHTS ('000)</b>											
<b>2000</b>											
September quarter	18.2	68.6	66.3	45.0	88.6	187.3	810.0	28.8	177.1	35.9	35.7
<b>2001</b>											
July	4.7	22.2	22.5	18.8	29.0	55.4	260.0	12.7	64.1	12.2	8.4
August	5.4	23.0	22.7	15.5	31.1	57.5	288.6	8.4	53.9	11.3	10.4
September	8.1	29.1	26.8	14.2	27.9	39.6	292.0	10.6	65.7	18.0	12.4
September quarter	18.2	74.2	72.0	48.5	88.0	152.4	840.6	31.7	183.6	41.5	31.3
<b>GUEST ARRIVALS ('000)</b>											
<b>2000</b>											
September quarter	9.4	35.3	40.2	19.9	39.7	68.6	318.5	13.7	89.5	23.4	24.5
<b>2001</b>											
July	2.1	10.4	12.9	8.1	10.9	19.4	102.6	5.4	30.1	7.3	5.8
August	2.6	11.4	13.3	7.1	11.5	21.1	111.4	4.5	27.7	7.0	6.7
September	4.2	14.2	16.8	6.8	9.7	15.1	113.1	5.0	34.9	11.0	9.0
September quarter	8.9	36.0	43.0	21.9	32.1	55.7	327.0	15.0	92.7	25.3	21.4
<b>TAKINGS FROM ACCOMMODATION (\$'000)</b>											
<b>2000</b>											
September quarter	827	3 878	2 980	2 009	5 176	12 920	56 024	1 031	7 924	1 852	1 600
<b>2001</b>											
July	188	1 417	958	789	2 066	3 520	16 835	446	2 911	653	393
August	255	1 394	1 065	730	2 225	3 739	19 303	349	2 516	623	502
September	363	1 718	1 207	635	2 013	2 572	18 448	460	3 135	924	617
September quarter	806	4 529	3 230	2 154	6 305	9 831	54 586	1 255	8 563	2 200	1 511



Period	Greater Hobart	Southern	East Coast	Northern	Greater Launceston	North West	West Coast
ESTABLISHMENTS, CAPACITY AND EMPLOYMENT (number)							
<b>September quarter 2000</b>							
Establishments	39	14	4	2	30	31	10
Guest rooms	2 124	458	n.p.	n.p.	1 349	970	411
Bed spaces	6 117	1 576	n.p.	n.p.	4 445	2 762	1 228
Persons employed	1 716	228	n.p.	n.p.	1 170	528	174
<b>September quarter 2001</b>							
Establishments	38	14	4	2	30	29	10
Guest rooms	2 116	460	n.p.	n.p.	1 323	895	412
Bed spaces	5 927	1 593	n.p.	n.p.	4 238	2 601	1 168
Persons employed	1 691	223	n.p.	n.p.	1 033	448	189
ROOM NIGHTS OCCUPIED ('000)							
<b>2000</b>							
September quarter	93.3	10.3	n.p.	n.p.	48.9	26.4	8.2
<b>2001</b>							
July	29.9	3.0	n.p.	n.p.	13.8	8.2	2.6
August	32.3	2.8	n.p.	n.p.	15.3	7.7	2.3
September	37.9	3.7	n.p.	n.p.	15.8	8.3	3.5
September quarter	100.1	9.5	n.p.	n.p.	44.8	24.2	8.3
ROOM OCCUPANCY RATES (%)							
<b>2000</b>							
September quarter	48.6	24.4	n.p.	n.p.	39.4	29.5	21.8
<b>2001</b>							
July	45.6	20.9	n.p.	n.p.	33.6	29.6	20.4
August	49.3	19.3	n.p.	n.p.	37.2	27.6	17.6
September	60.0	26.9	n.p.	n.p.	39.8	31.1	28.1
September quarter	51.5	22.3	n.p.	n.p.	36.8	29.4	22.0
GUEST NIGHTS ('000)							
<b>2000</b>							
September quarter	164.3	21.0	n.p.	n.p.	86.6	43.3	13.7
<b>2001</b>							
July	50.5	6.0	n.p.	n.p.	23.8	12.9	4.4
August	53.3	5.5	n.p.	n.p.	25.6	11.9	3.6
September	64.7	8.1	n.p.	n.p.	30.1	14.1	6.4
September quarter	168.5	19.5	n.p.	n.p.	79.4	38.8	14.4
GUEST ARRIVALS ('000)							
<b>2000</b>							
September quarter	65.1	15.7	n.p.	n.p.	52.1	25.7	9.6
<b>2001</b>							
July	21.7	4.4	n.p.	n.p.	13.0	7.5	2.7
August	23.0	3.9	n.p.	n.p.	14.5	7.3	2.2
September	24.7	5.2	n.p.	n.p.	15.7	9.0	3.4
September quarter	69.3	13.5	n.p.	n.p.	43.2	23.8	8.3
TAKINGS FROM ACCOMMODATION (\$'000)							
<b>2000</b>							
September quarter	9 561	896	n.p.	n.p.	4 359	2 345	631
<b>2001</b>							
July	2 948	287	n.p.	n.p.	1 221	754	178
August	3 146	263	n.p.	n.p.	1 305	686	146
September	3 885	352	n.p.	n.p.	1 438	780	239
September quarter	9 980	902	n.p.	n.p.	3 964	2 220	563

Period	Darwin	Kakadu	Arnhem	Katherine	Tablelands	Petermann	Alice Springs	MacDonnell	Daly	Canberra
<b>ESTABLISHMENTS, CAPACITY AND EMPLOYMENT (number)</b>										
<b>September quarter 2000</b>										
Establishments	35	4	3	10	7	7	22	2	1	60
Guest rooms	2 619	n.p.	83	528	250	n.p.	1 610	n.p.	n.p.	5 023
Bed spaces	7 750	n.p.	283	1 455	708	n.p.	4 928	n.p.	n.p.	15 178
Persons employed	1 534	n.p.	51	210	58	n.p.	726	n.p.	n.p.	2 537
<b>September quarter 2001</b>										
Establishments	34	4	3	10	6	7	22	2	1	60
Guest rooms	2 599	n.p.	n.p.	528	n.p.	n.p.	1 617	n.p.	n.p.	5 113
Bed spaces	7 661	n.p.	n.p.	1 493	n.p.	n.p.	4 844	n.p.	n.p.	15 088
Persons employed	1 419	n.p.	n.p.	209	n.p.	n.p.	781	n.p.	n.p.	2 240
<b>ROOM NIGHTS OCCUPIED ('000)</b>										
<b>2000</b>										
September quarter	201.0	n.p.	3.7	27.4	8.4	n.p.	89.1	n.p.	n.p.	262.4
<b>2001</b>										
July	70.0	n.p.	n.p.	12.0	n.p.	n.p.	36.2	n.p.	n.p.	96.3
August	70.5	n.p.	n.p.	10.7	n.p.	n.p.	32.3	n.p.	n.p.	94.5
September	56.2	n.p.	n.p.	7.8	n.p.	n.p.	32.1	n.p.	n.p.	102.7
September quarter	196.8	n.p.	n.p.	30.6	n.p.	n.p.	100.6	n.p.	n.p.	293.4
<b>ROOM OCCUPANCY RATES (%)</b>										
<b>2000</b>										
September quarter	83.4	n.p.	48.5	56.5	36.5	n.p.	60.2	n.p.	n.p.	56.8
<b>2001</b>										
July	86.9	n.p.	n.p.	73.4	n.p.	n.p.	72.2	n.p.	n.p.	60.7
August	87.6	n.p.	n.p.	65.4	n.p.	n.p.	64.5	n.p.	n.p.	59.6
September	72.1	n.p.	n.p.	49.5	n.p.	n.p.	66.2	n.p.	n.p.	66.9
September quarter	82.3	n.p.	n.p.	63.0	n.p.	n.p.	67.6	n.p.	n.p.	62.4
<b>GUEST NIGHTS ('000)</b>										
<b>2000</b>										
September quarter	342.2	n.p.	5.9	54.9	14.4	n.p.	158.8	n.p.	n.p.	443.5
<b>2001</b>										
July	121.1	n.p.	n.p.	21.8	n.p.	n.p.	63.0	n.p.	n.p.	175.1
August	120.9	n.p.	n.p.	19.2	n.p.	n.p.	54.5	n.p.	n.p.	156.2
September	91.0	n.p.	n.p.	14.6	n.p.	n.p.	55.2	n.p.	n.p.	182.0
September quarter	333.0	n.p.	n.p.	55.5	n.p.	n.p.	172.7	n.p.	n.p.	513.2
<b>GUEST ARRIVALS ('000)</b>										
<b>2000</b>										
September quarter	133.4	n.p.	2.3	33.8	11.1	n.p.	73.1	n.p.	n.p.	201.8
<b>2001</b>										
July	50.6	n.p.	n.p.	14.6	n.p.	n.p.	30.2	n.p.	n.p.	78.1
August	50.7	n.p.	n.p.	13.4	n.p.	n.p.	27.1	n.p.	n.p.	74.7
September	39.6	n.p.	n.p.	10.7	n.p.	n.p.	24.1	n.p.	n.p.	79.9
September quarter	141.0	n.p.	n.p.	38.7	n.p.	n.p.	81.4	n.p.	n.p.	232.7
<b>TAKINGS FROM ACCOMMODATION (\$'000)</b>										
<b>2000</b>										
September quarter	22 884	n.p.	548	2 098	560	n.p.	7 498	n.p.	n.p.	29 878
<b>2001</b>										
July	7 968	n.p.	n.p.	895	n.p.	n.p.	3 077	n.p.	n.p.	10 203
August	8 341	n.p.	n.p.	801	n.p.	n.p.	2 782	n.p.	n.p.	10 417
September	6 149	n.p.	n.p.	594	n.p.	n.p.	2 589	n.p.	n.p.	11 425
September quarter	22 458	n.p.	n.p.	2 290	n.p.	n.p.	8 448	n.p.	n.p.	32 045

## EXPLANATORY NOTES

---

### INTRODUCTION

- 1** This publication contains data from the ABS quarterly Survey of Tourist Accommodation (STA). The STA is a mailout collection that completely enumerates all in-scope accommodation establishments.
- 2** From the March quarter 1998, the scope and collection strategy for the STA was changed to include only significant accommodation establishments (these are defined below).

### SCOPE

- 3** On a quarterly basis, the STA includes hotels, resorts, motels, guest houses and serviced apartments with 15 or more rooms or units.
- 4** Every third year beginning with 2000, the STA expands to also include:
  - holiday flats, units and houses of letting entities with 15 or more rooms or units;
  - caravan parks with 40 or more powered sites;
  - visitor hostels with 25 or more bed spaces.
- 5** The short-term non-residential accommodation which is in scope of the STA is accommodation which is not leased, and which is provided to guests who would generally stay for periods of less than two months.
- 6** Some establishments also provide long-term residential accommodation. For hotels, motels, guest houses and serviced apartments, the amount of such activity is considered to be insignificant and is included in the data presented in this publication.

### DEFINITIONS OF ACCOMMODATION ESTABLISHMENTS

- 7** The STA includes the following categories of establishments which provide predominantly short-term non-residential accommodation to the general public:
  - hotels and resorts with facilities - establishments with 15 or more rooms which are licensed to operate a public bar and which provide accommodation on a room/suite basis, with a bath/shower and toilet in most guest rooms, but which do not have full cooking facilities (i.e. hot plates and oven/microwave) in most guest rooms;
  - motels, private hotels and guest houses with facilities - establishments with 15 or more rooms which are not licensed to operate a public bar, and which provide accommodation on a room/suite basis, with a bath/shower and toilet in most guest rooms, but which do not have full cooking facilities (i.e. hot plates and oven/microwave) in most guest rooms;
  - serviced apartments - establishments with 15 or more units which mostly comprise self-contained units at the same location, and which are available on a unit/apartment basis to the general public for a minimum of one night; the units should have full cooking facilities (i.e. hot plates and oven/microwave), refrigerator and bath/shower and toilet facilities; all bed linen and towels should be provided, and daily servicing (i.e. cleaning and bed making) must be available through the on-site management, although this service need not necessarily be used.

## EXPLANATORY NOTES *continued*

---

CLASSIFICATION CHANGES	<p><b>8</b> As a result of the separate classification of serviced apartments from the March quarter 1998, there have been several changes to definitions of accommodation units. Some units, which were formerly in categories such as hotels, motels or holiday flats, units and houses are now classified as serviced apartments. A small number of establishments which were previously classified as motels have been reclassified as holiday flats, units and houses and are therefore no longer in scope of the quarterly STA, except as described in paragraph 4.</p>
COVERAGE	<p><b>9</b> Coverage is comprehensive and from the September quarter 1999, is obtained from the Australian Automobile Association accommodation guide, supplied as an electronic file, which is updated twice yearly. This is supplemented by notification of new tourism developments and their likely opening dates in selected guides, major tourism journals and periodicals and newspapers. Periodic comparison with lists of accommodation establishments provided by the various Tourism Commissions and Industry Associations is also undertaken.</p>
DATA QUALITY	<p><b>10</b> The survey does not have a sample component and the data are not subject to sampling variability. However, other inaccuracies collectively referred to as non-sampling error may affect the data. These non-sampling errors may arise from a number of sources, including:</p> <ul style="list-style-type: none"><li>▪ errors in the reporting of data by respondents;</li><li>▪ errors in the process of capturing data;</li><li>▪ estimation for missing data; and</li><li>▪ definition and classification errors.</li></ul> <p>Every effort has been made to reduce non-sampling error to a minimum by careful design and testing of questionnaires, and efficient operating procedures and systems used to compile statistics.</p> <p><b>11</b> The September quarter 2001 response rates were:</p> <ul style="list-style-type: none"><li>▪ 92% licensed hotels</li><li>▪ 92% motels and guest houses</li><li>▪ 92% serviced apartments</li></ul>
TAKINGS FROM ACCOMMODATION	<p><b>12</b> From 1 July 2000, takings from accommodation include gross revenue from the provision of accommodation, including GST. Takings from meals are excluded. Where businesses are unable to provide the data inclusive of GST, it is automatically adjusted by the ABS prior to aggregation and release in output.</p>

## EXPLANATORY NOTES *continued*

---

### REGIONAL DATA

**13** Survey results are aggregated to Tourism Regions as defined by relevant State and Territory Tourist Commissions or equivalent organisations. Tourism Regions are reviewed annually and are subject to boundary and name changes. Where changes have occurred care should be taken when making comparisons with previously published data at this level.

Details of the composition of Tourism Regions and major changes to Tourism Regions can be found in *Tourist Accommodation, Small Area Data* Standard Data Service products for each State/Territory (Cat. no. 8635.n.40.001) (issued quarterly). Outline maps of Tourism Regions are also provided in these Small Area Data products.

### ANNUAL CAPACITY DATA

**14** ABS releases counts of accommodation establishments and their capacity as at the end of December each year in respect of the pre-1998 scope of the survey (but recognising serviced apartments separately) as follows:

- hotels, motels and guest houses and serviced apartments with facilities and having five or more rooms;
- holiday flats, units and houses (other than those included with serviced apartments) which are operated by owners, managers or real estate agents who have sole letting rights to at least five flats, units or houses for short term letting;
- all caravan parks regardless of size; and
- all visitor hostels regardless of size.

**15** As a result of classification changes applied from March quarter 1998 onward, data will not be comparable with that previously published for particular accommodation types.

**16** These counts are published annually in a quarterly issue of *Tourism Indicators, Australia* (Cat. no. 8634.0).

### STATISTICS AVAILABLE ON REQUEST

**17** The ABS makes tourist accommodation data available on request, including statistics for past quarters, for specific areas and specific data items. For example, detailed employment statistics showing the number of full-time, part-time or casual employees may be available. Normally such data is made available on a fee for service basis.

### RELATED PUBLICATIONS

**18** Other ABS publications and products which may be of interest include:  
*Directory of Tourism Statistics, 2000* (Cat. no. 1130.0) (irregular)  
*Overseas Arrivals and Departures, Australia* (Cat. no. 3401.0) (issued monthly)  
*Tourism Indicators, Australia* (Cat. no. 8634.0) (issued quarterly)  
*Tourist Accommodation, Small Area Data* Standard Data Service (SDS) products for each State/Territory (except the ACT) (Cat. no. 8635.n.40.001) (issued quarterly).

**19** Current publications produced by the ABS are listed in the *Catalogue of Publications and Products* (Cat. no. 1101.0). The ABS also issues the *Release Advice* (Cat. no. 1105.0) on Tuesdays and Fridays which lists publications to be released in the next few days. Both are available from any ABS office or the ABS web site.

### EFFECTS OF ROUNDING

**20** Where figures have been rounded, discrepancies may occur between totals and the sum of the component items.

## GLOSSARY

---

<b>Average length of stay</b>	Average length of stay is expressed in numbers of days and calculated by dividing <i>Guest nights</i> by <i>Guest arrivals</i> .
<b>Bed spaces</b>	Three-quarter beds are counted as one bed space; double beds as two bed spaces. Cots are excluded.
<b>Capacity</b>	Capacity in terms of <i>Guest rooms/units</i> or <i>Bed spaces</i> is the maximum number available to accommodate paying guests during the survey period. Capacity closed temporarily for seasonal reasons is included.
<b>Establishments</b>	The number of hotels, motels and guest houses and serviced apartments within the scope of the survey which operated for any part of the survey period, or which closed temporarily for the quarter for seasonal reasons.
<b>Guest arrivals</b>	The total number of paying guests counted only on the first night they stayed at the accommodation establishment during the survey period.
<b>Guest rooms</b>	The maximum number of rooms available at each establishment during the survey period for accommodating short-term paying guests. Units and apartments within serviced apartments are treated as rooms in these survey results.
<b>Occupancy</b>	Occupancy in terms of <i>Room nights</i> refers to the total number of nights each guest room or unit was occupied during the survey period.  Occupancy in terms of <i>Guest nights</i> refers to the total number of paying guests counted on each night they stayed at the accommodation establishment during the survey period.
<b>Occupancy rates</b>	<i>Occupancy rates</i> represent occupancy expressed as a percentage of total capacity available during the survey period, e.g. for the period $\text{Room occupancy rate (\%)} = \frac{\text{Room nights occupied}}{(\text{Guest rooms}) \times (\text{No. of days in the period})} \times 100$ providing that, for establishments closing (other than for seasonal reasons) or opening during the survey period, the denominator of the above expression includes only operating periods.
<b>Persons employed</b>	The total number of persons working at each accommodation establishment at the end of the survey period (including working proprietors and those working on other than accommodation activities).
<b>Room nights available</b>	The number of guest rooms/units available multiplied by the number of days for which they were available during the survey period. For establishments closing (other than for seasonal reasons) or opening during this period, operating periods only are included.

**Star grading** The grading of hotels, motels and guest houses with facilities and serviced apartments based on the classification system used by members of the Australian Automobile Association (AAA). The gradings are allocated according to a points system based on the amenities and facilities available to guests. Details of the grading scheme are contained in the RACV-RAASA members' publication *Accommodation Australia*, or the individual tour guides produced by members of the AAA. For the purpose of classifying establishments to a star grading in this publication, 'half' star gradings are ignored (e.g. a two and a half star grading has been shown as two star).

From the September quarter 1999, some (very few) large establishments not star graded by the AAA have been allocated a star grade by the ABS for Survey of Tourist Accommodation statistical tabulation purposes.

**Takings from accommodation** Since 1 July 2000, takings from accommodation include gross revenue from the provision of accommodation, including GST. Takings from meals are excluded. In cases where takings from accommodation data cannot be provided inclusive of GST the amount of GST payable is estimated and the data revised accordingly.

Prior to 1 July 2000, takings from accommodation for some jurisdictions included bed taxes. From 1 July bed taxes were abolished being replaced by GST. Takings from accommodation for each month generally represent the takings received during that month. Where payments are received in advance of, or after, the provision of accommodation to guests, the monthly figure for takings from accommodation may not necessarily bear a direct relationship to the number of guests accommodated during the month.

## FOR MORE INFORMATION...

- INTERNET* **www.abs.gov.au** the ABS web site is the best place to start for access to summary data from our latest publications, information about the ABS, advice about upcoming releases, our catalogue, and Australia Now—a statistical profile.
- LIBRARY* A range of ABS publications is available from public and tertiary libraries Australia-wide. Contact your nearest library to determine whether it has the ABS statistics you require, or visit our web site for a list of libraries.
- CPI INFOLINE* For current and historical Consumer Price Index data, call 1902 981 074 (call cost 77c per minute).
- DIAL-A-STATISTIC* For the latest figures for National Accounts, Balance of Payments, Labour Force, Average Weekly Earnings, Estimated Resident Population and the Consumer Price Index call 1900 986 400 (call cost 77c per minute).

### INFORMATION SERVICE

Data which have been published and can be provided within five minutes are free of charge. Our information consultants can also help you to access the full range of ABS information—ABS user-pays services can be tailored to your needs, time frame and budget. Publications may be purchased. Specialists are on hand to help you with analytical or methodological advice.

- PHONE* **1300 135 070**
- EMAIL* **client.services@abs.gov.au**
- FAX* 1300 135 211
- POST* Client Services, ABS, GPO Box 796, Sydney 1041

## WHY NOT SUBSCRIBE?

ABS subscription services provide regular, convenient and prompt deliveries of ABS publications and products as they are released. Email delivery of monthly and quarterly publications is available.

- PHONE* 1300 366 323
- EMAIL* subscriptions@abs.gov.au
- FAX* 03 9615 7848
- POST* Subscription Services, ABS, GPO Box 2796Y, Melbourne 3001



2863500009014  
ISSN 1031-0770

RRP \$22.00

© Commonwealth of Australia 2001

Produced by the Australian Bureau of Statistics